

# **8051 Evaluation Board**

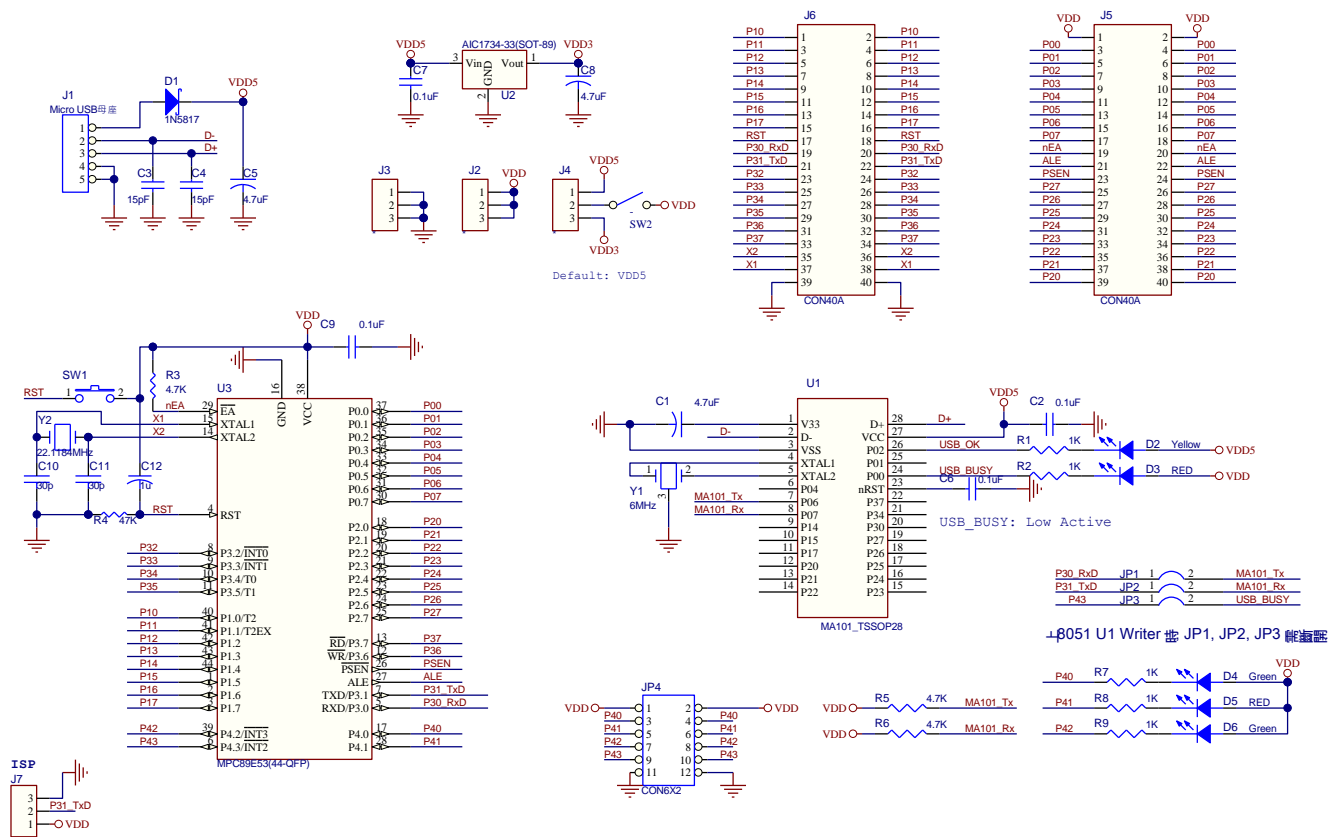
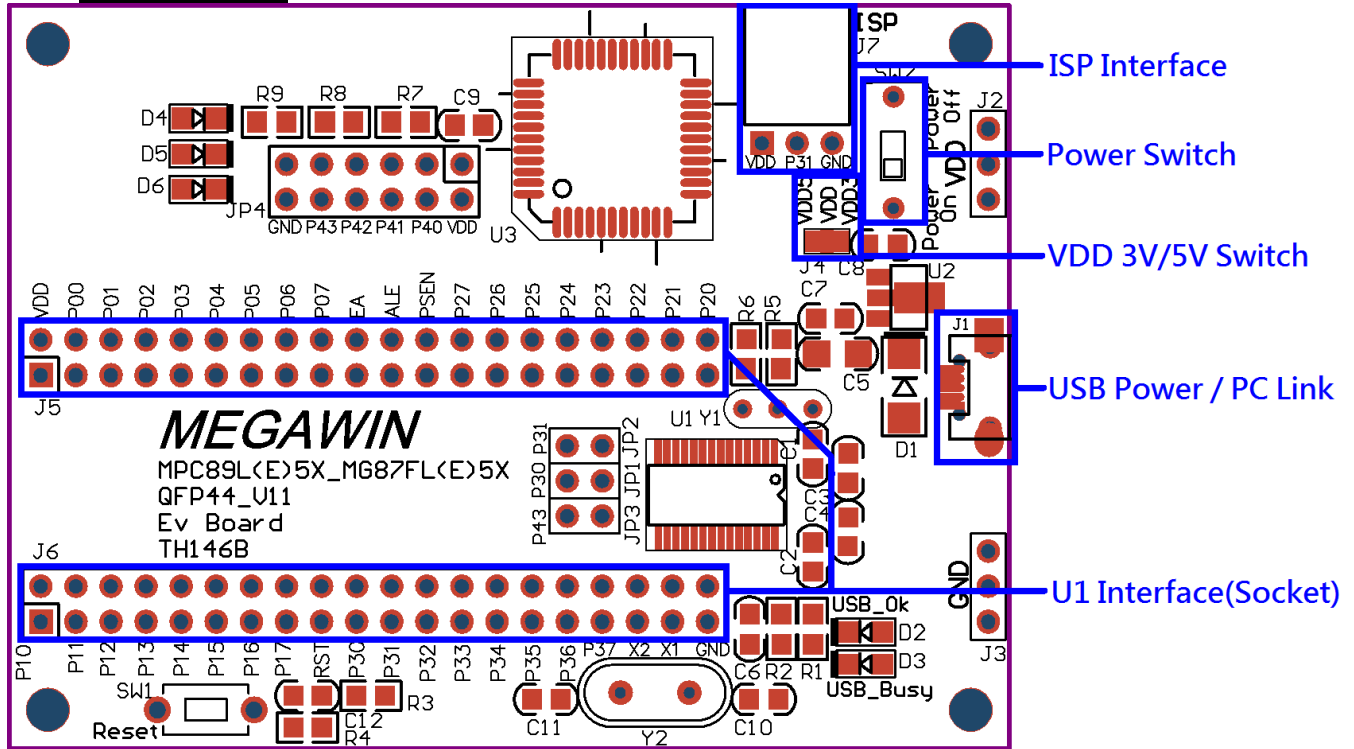
## **Explanation Manual**

## Contents

1	89 Series .....	3
1-1	MPC89L(E)5X .....	3
2	82 Series .....	4
2-1	MPC82L(E)52 .....	4
2-2	MPC82L(E)54 .....	5
2-3	MG82FL(E)3XX.....	6
2-4	MG82FL(E)5XX.....	7
2-5	MG82FG5A64.....	8
2-6	MG82FG5B32.....	9
2-7	MG82FG5C64.....	10
2-8	MG82FG5D16.....	11
2-9	MG82G5EXX .....	12
2-10	MG82F6D16 .....	13
2-11	MG82F6D17 .....	14
2-12	MG82F6D64 .....	15
2-13	MG82F5B32.....	16
3	86 Series .....	17
3-1	MG86FL(E)104 .....	17
3-2	MG86FL(E)508 .....	18
4	87 Series .....	19
4-1	MG87FL(E)5X.....	19
4-2	MG87FL(E)X051 .....	20
	Revision History.....	21

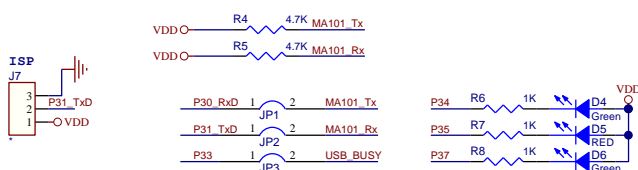
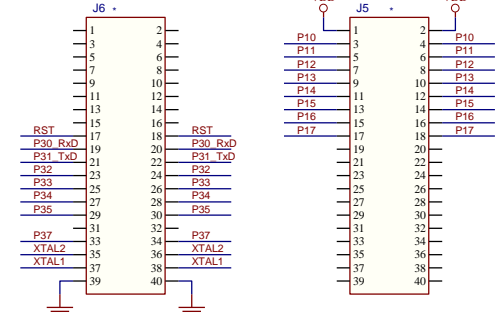
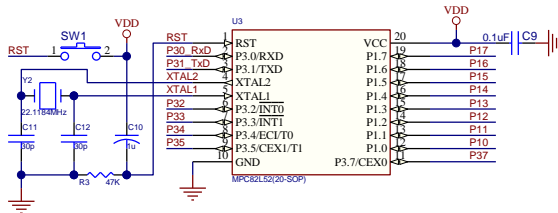
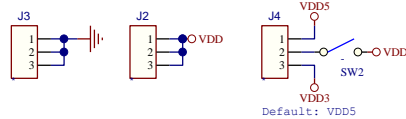
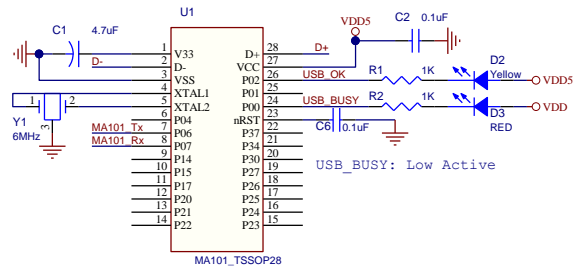
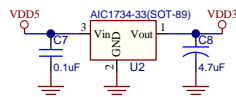
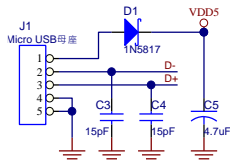
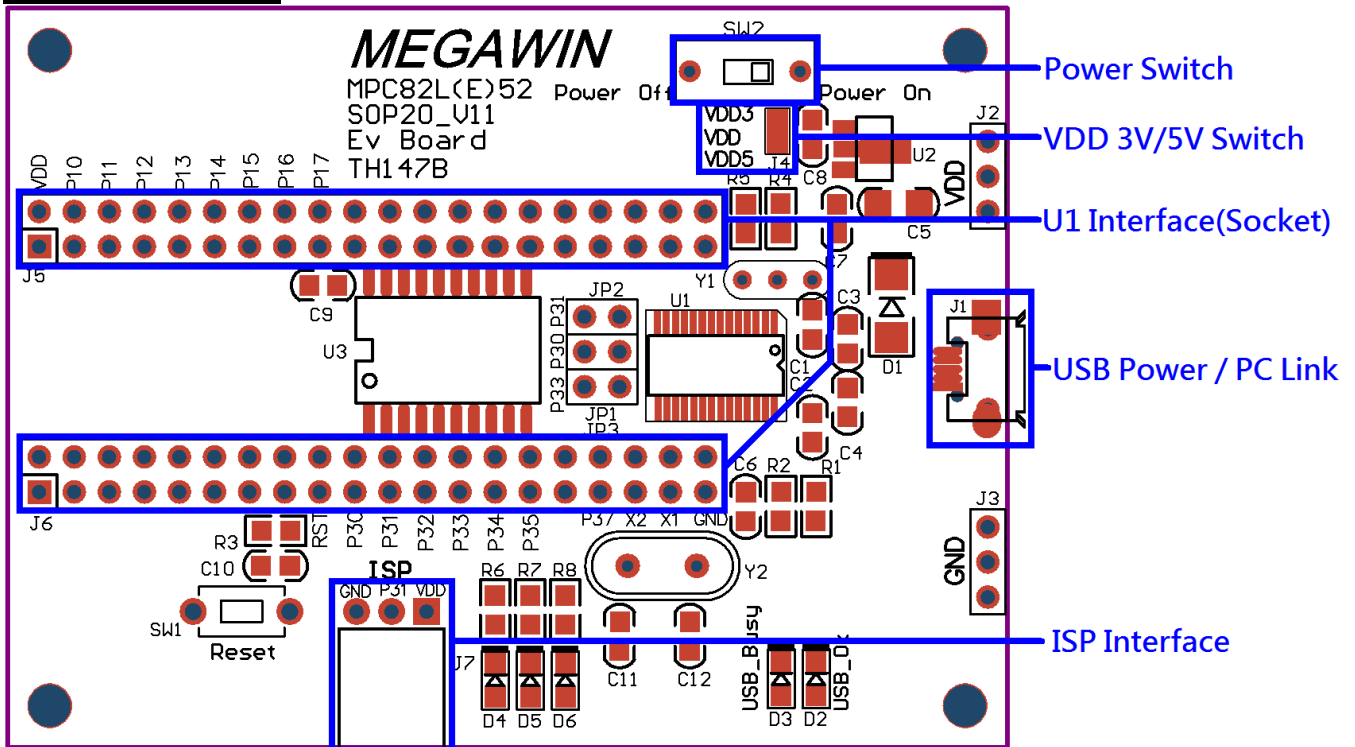
## 1 89 Series

### 1-1 MPC89L(E)5X



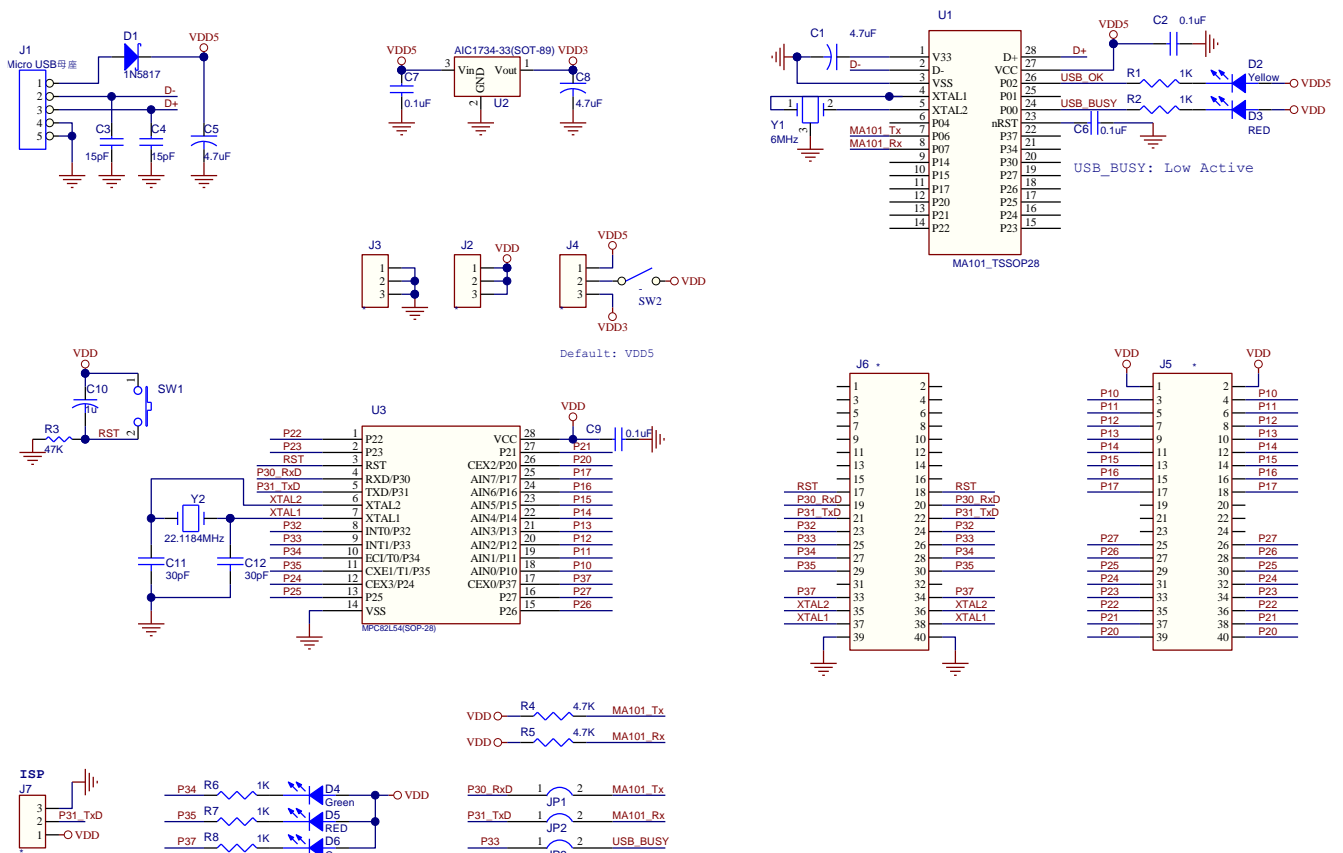
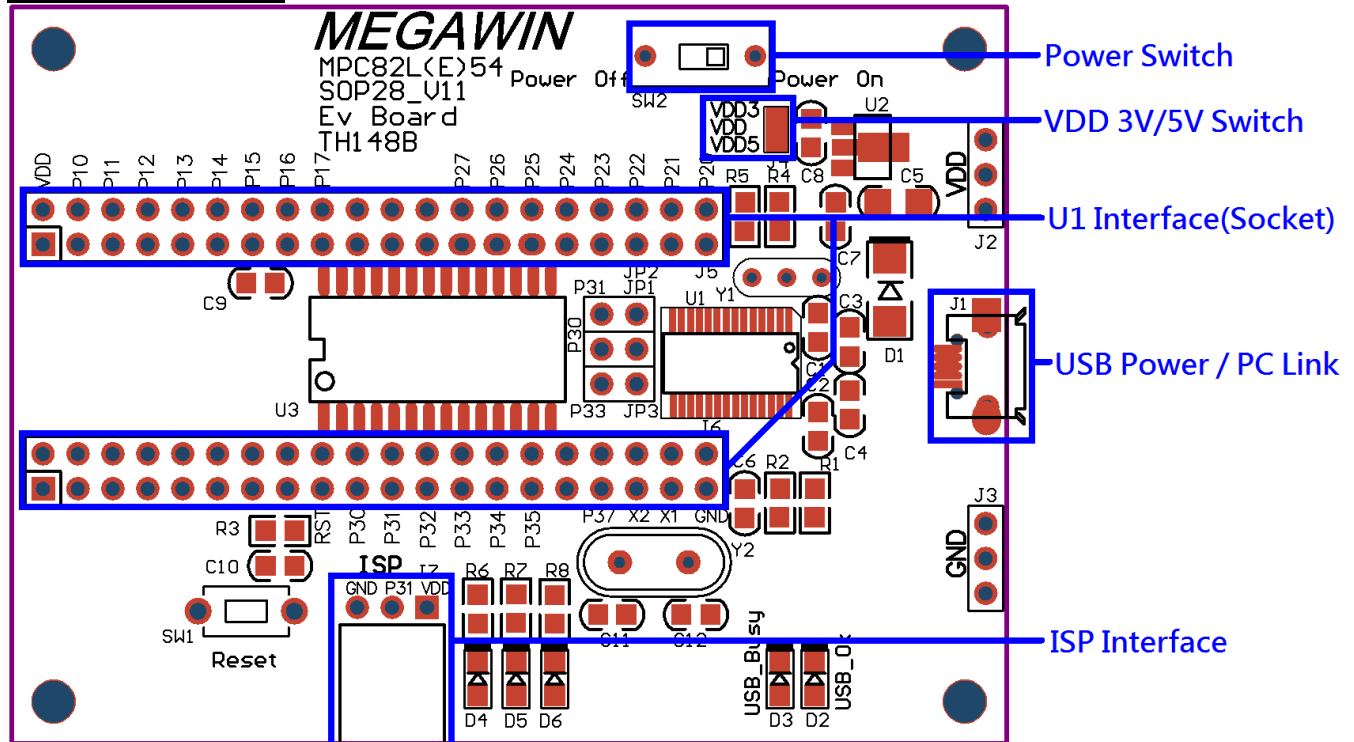
## 2 82 Series

### 2-1 MPC82L(E)52



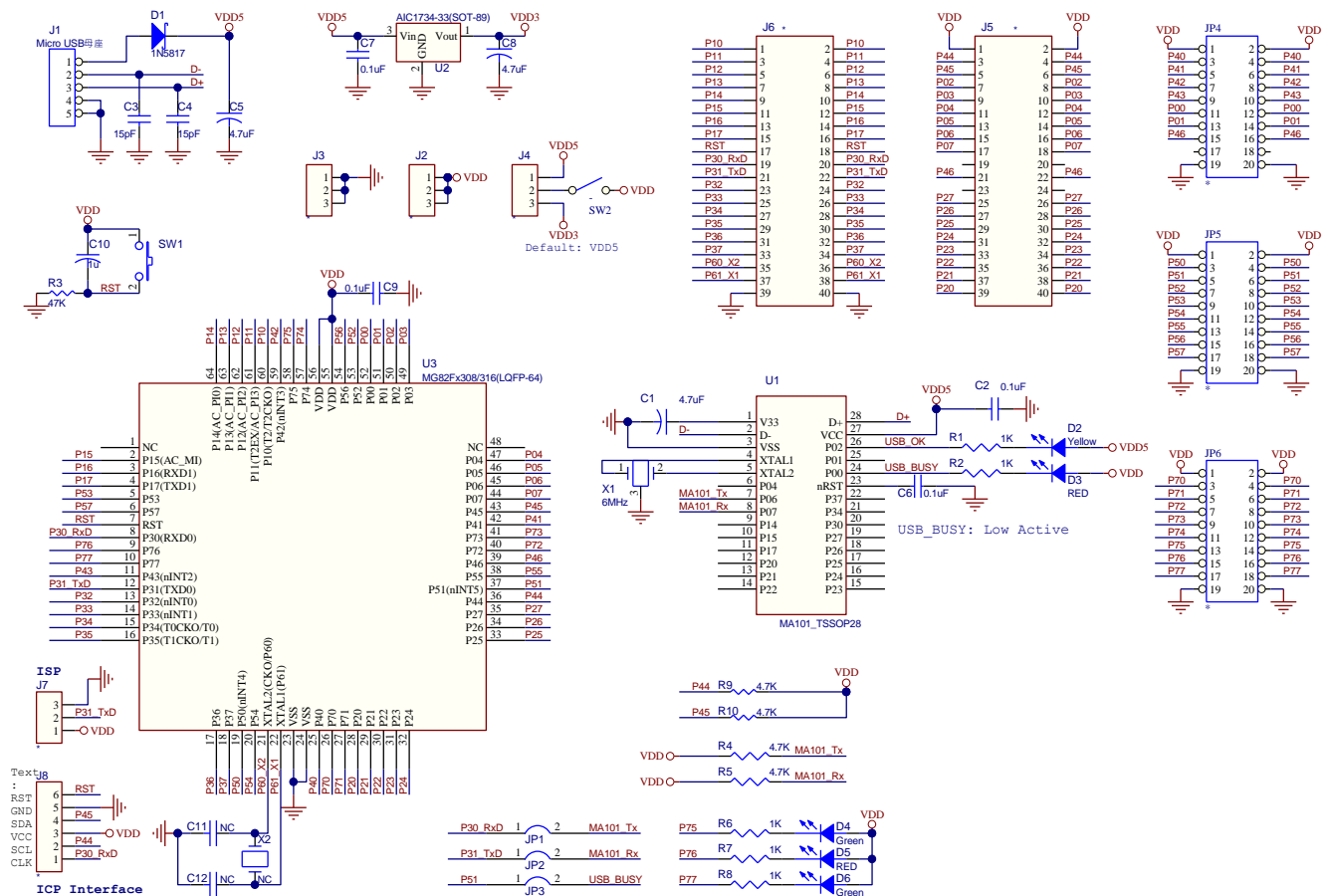
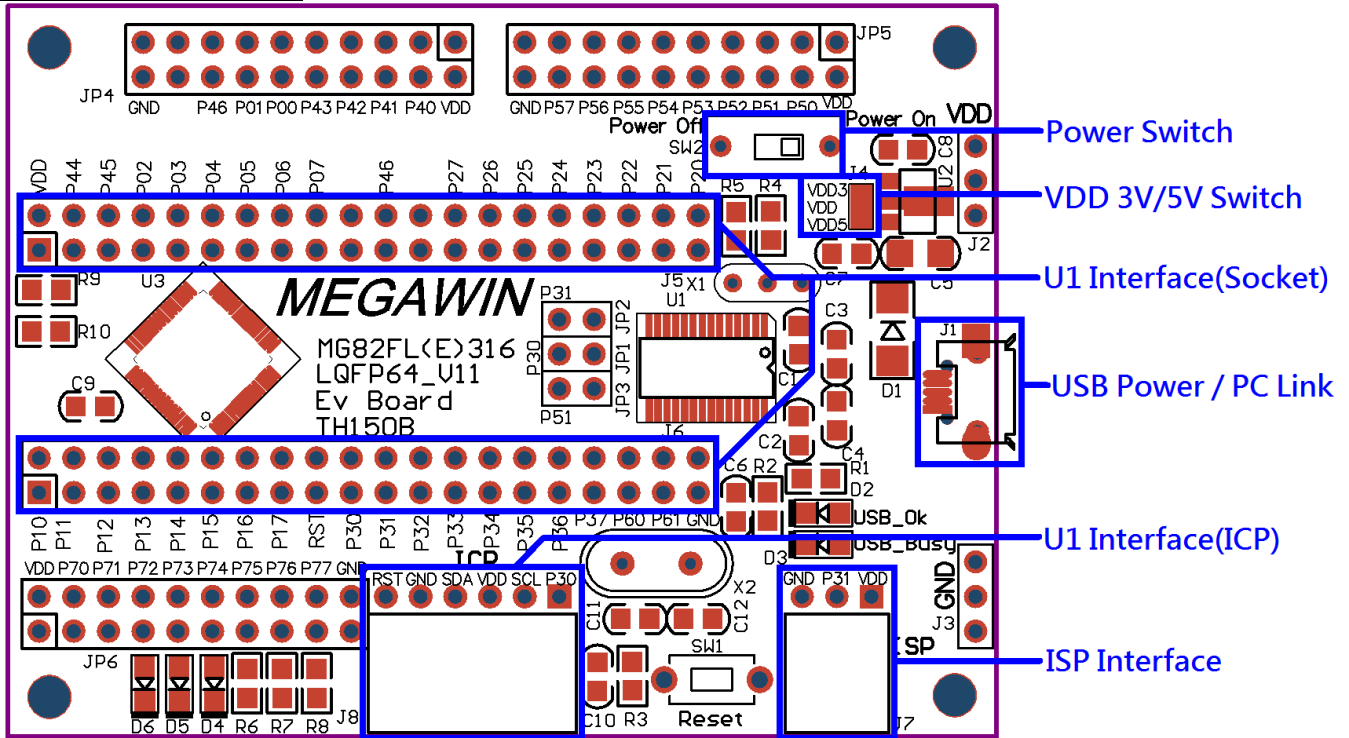
8051 U1 Writer 器 JP1, JP2, JP3 解読器

## 2-2 MPC82L(E)54

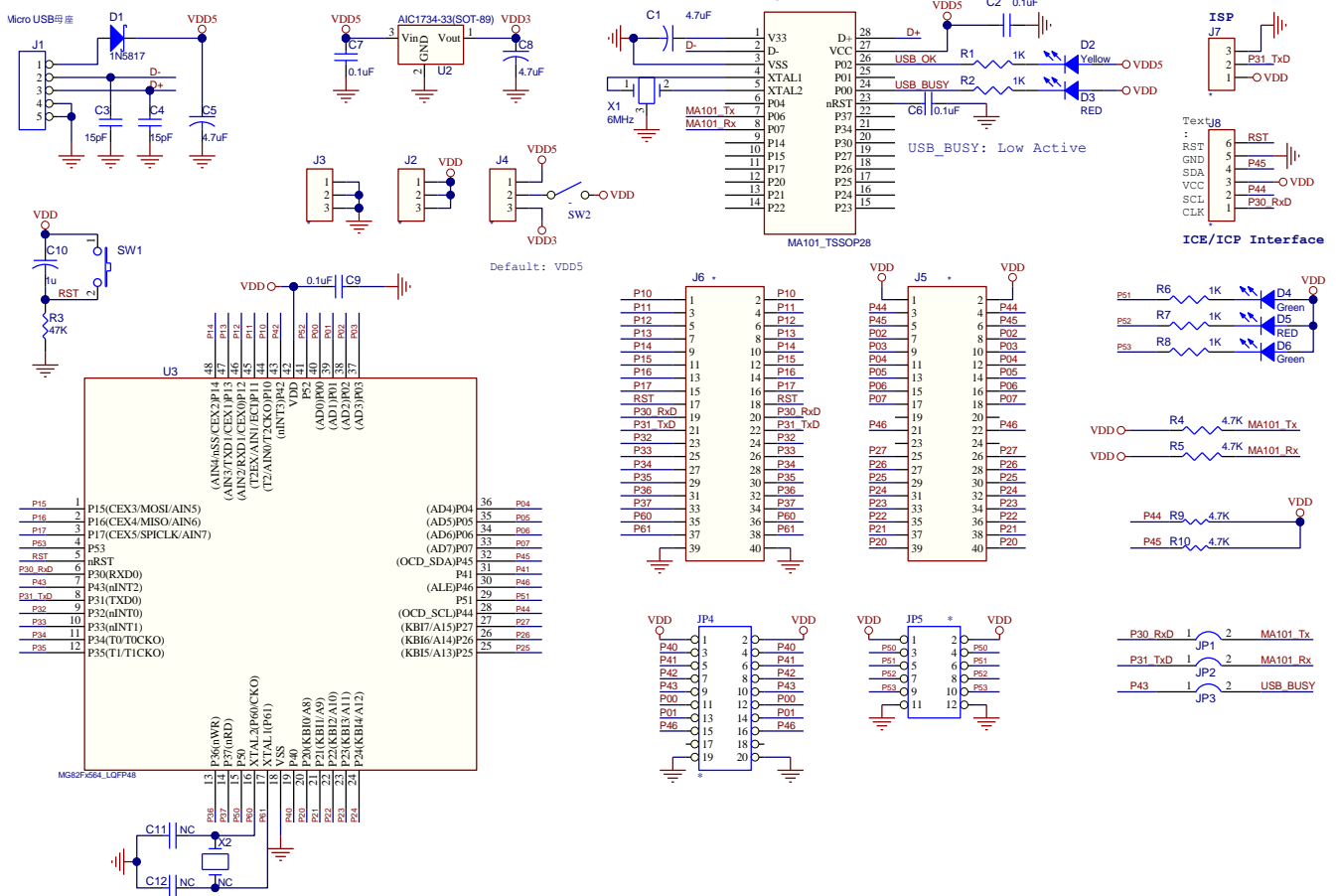
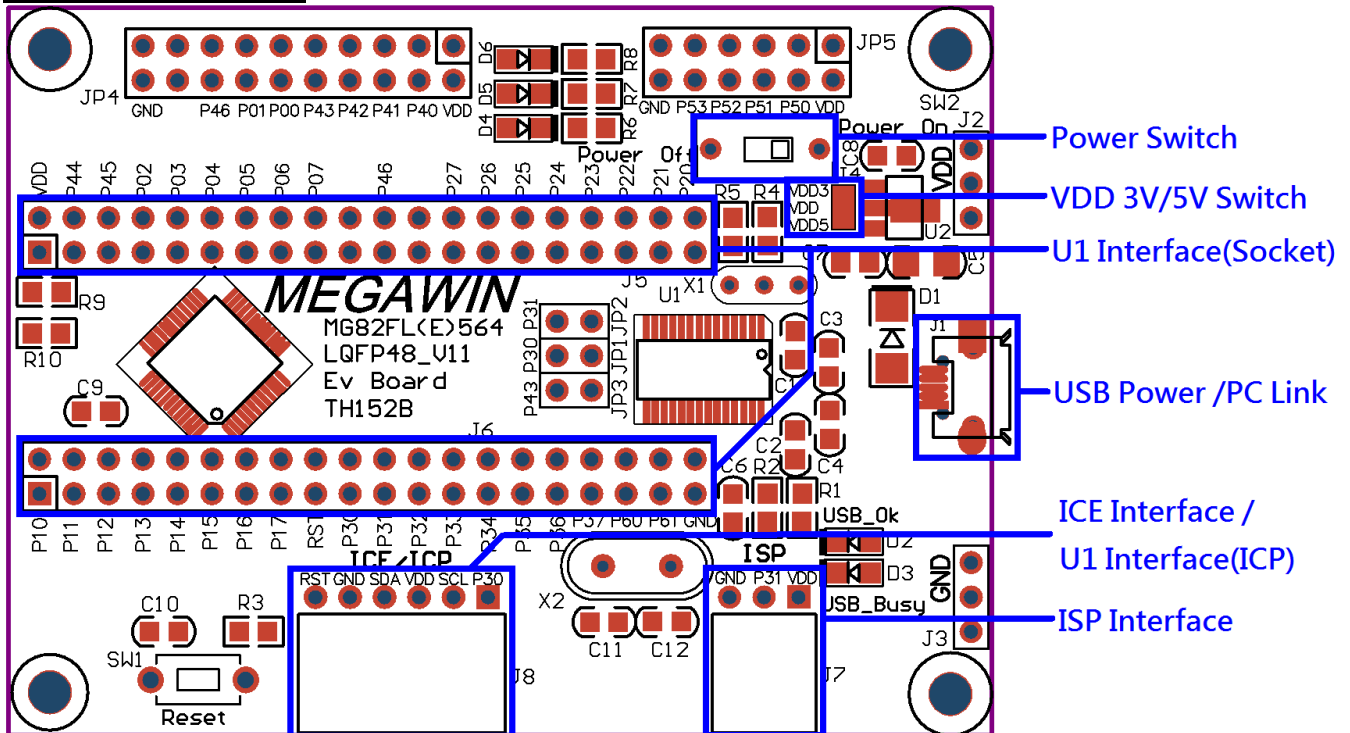


8051 U1 Writer 書 JP1, JP2, JP3 能通

## 2-3 MG82FL(E)3XX

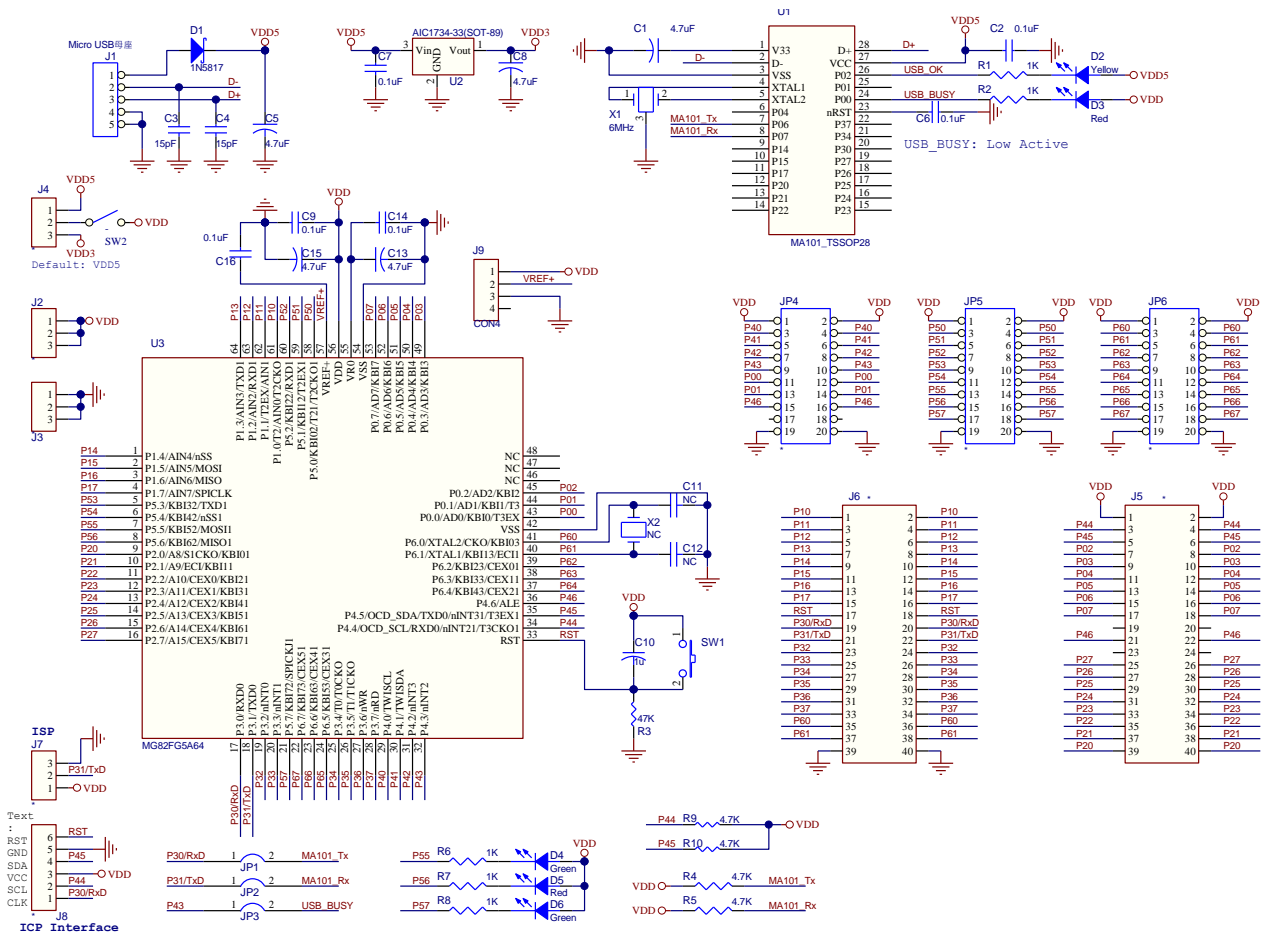
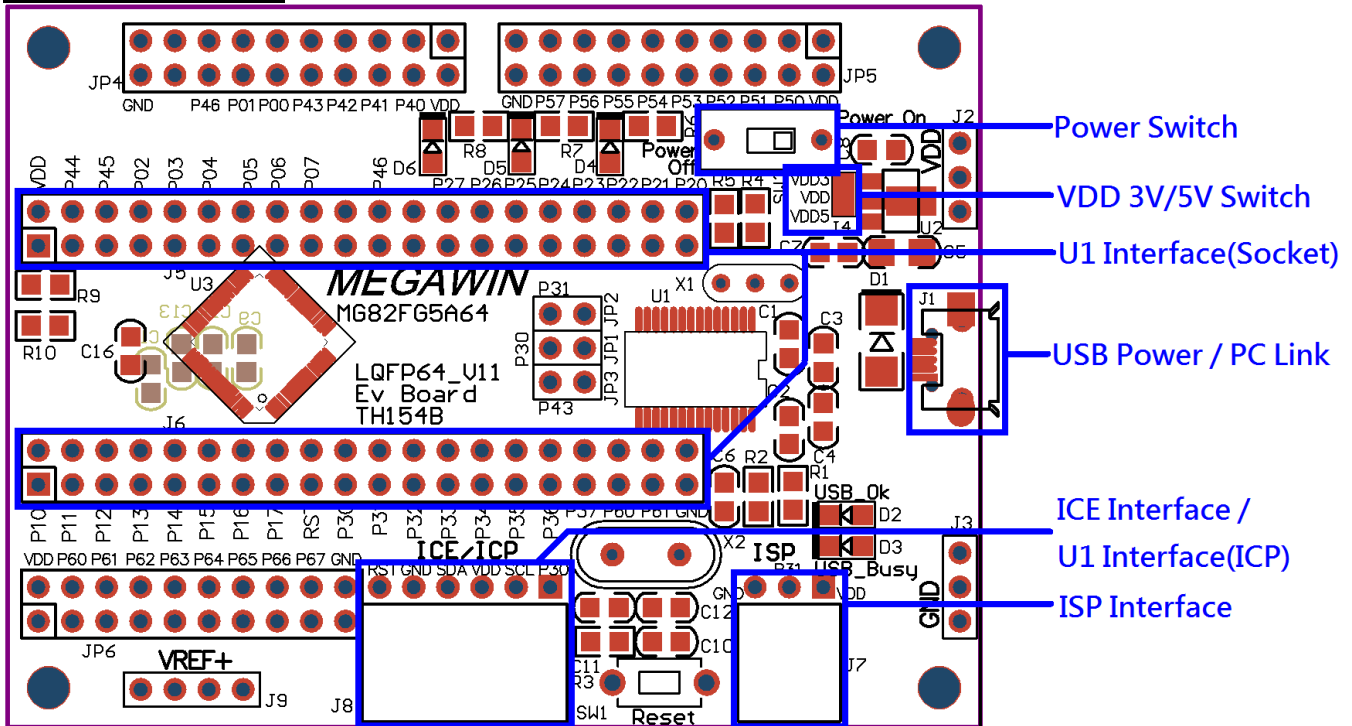


## 2-4 MG82FL(E)5XX



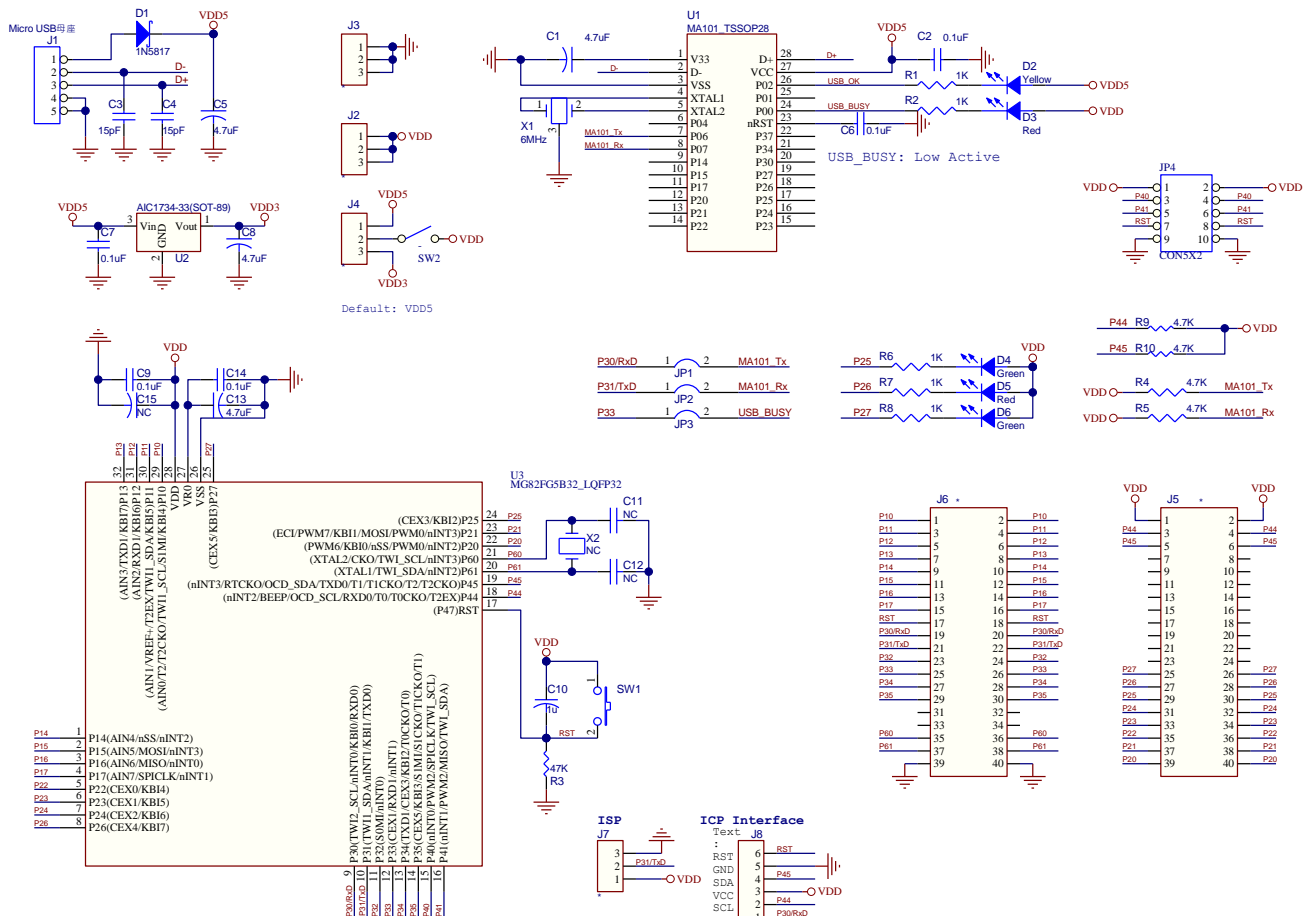
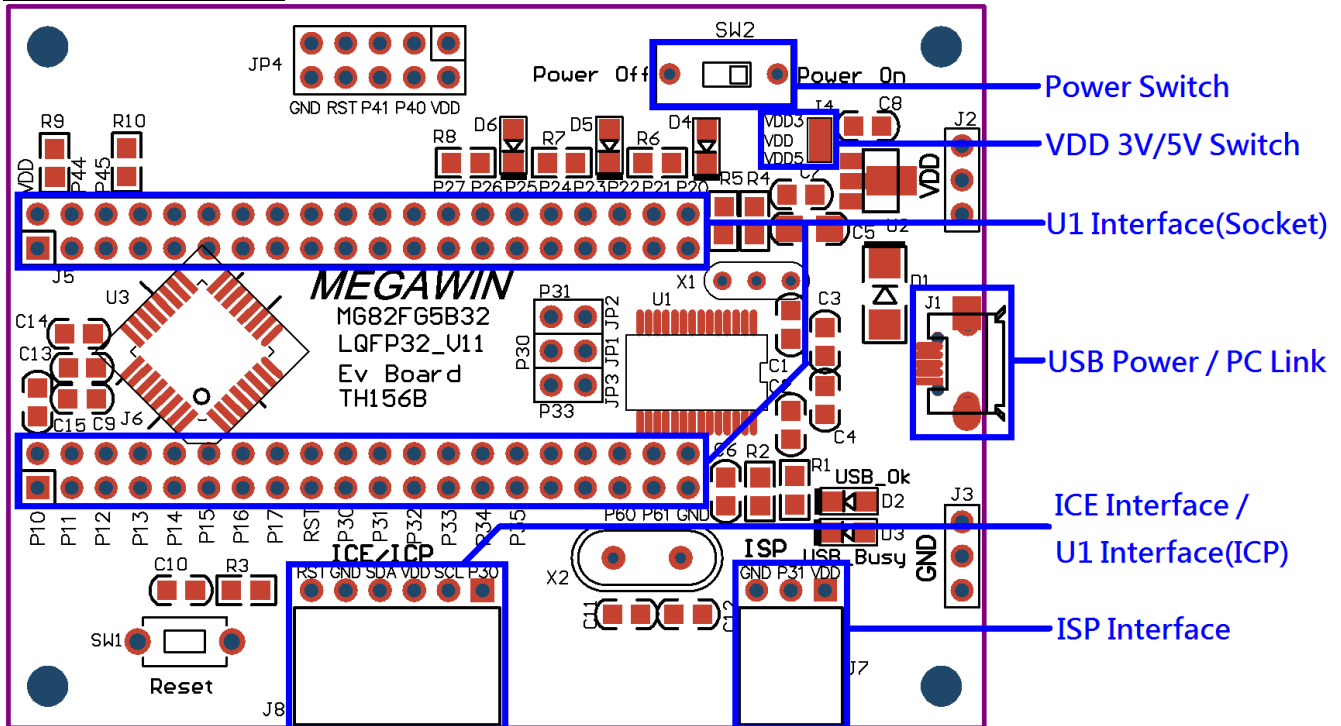


## 2-5 MG82FG5A64

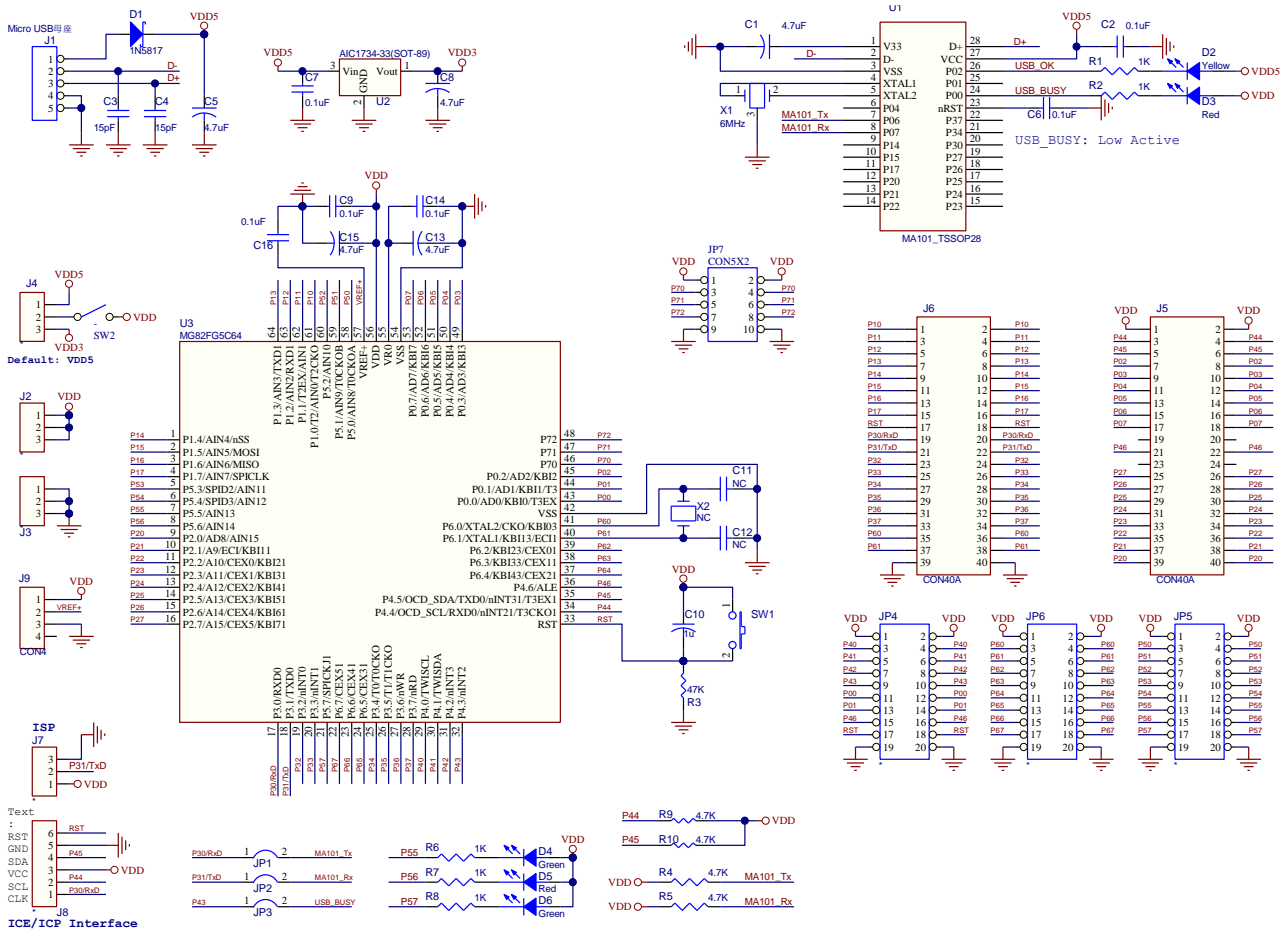
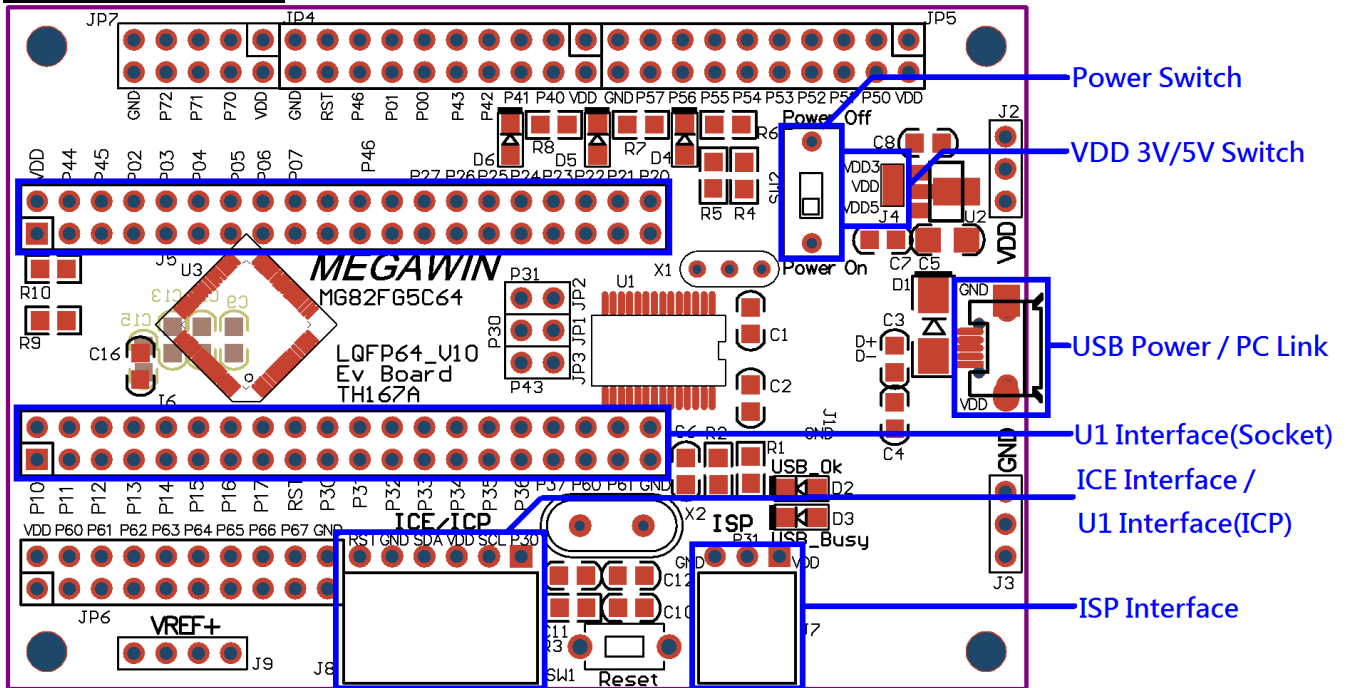




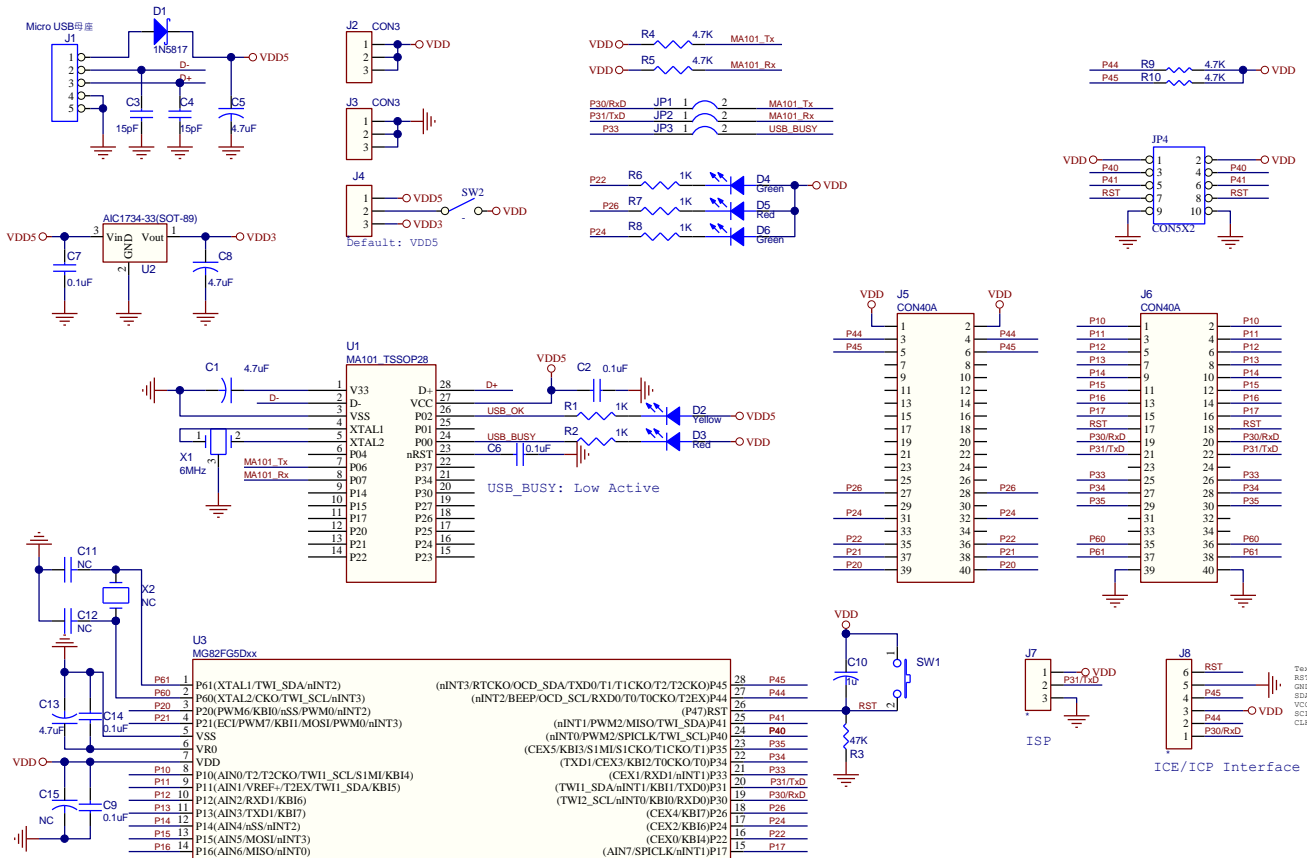
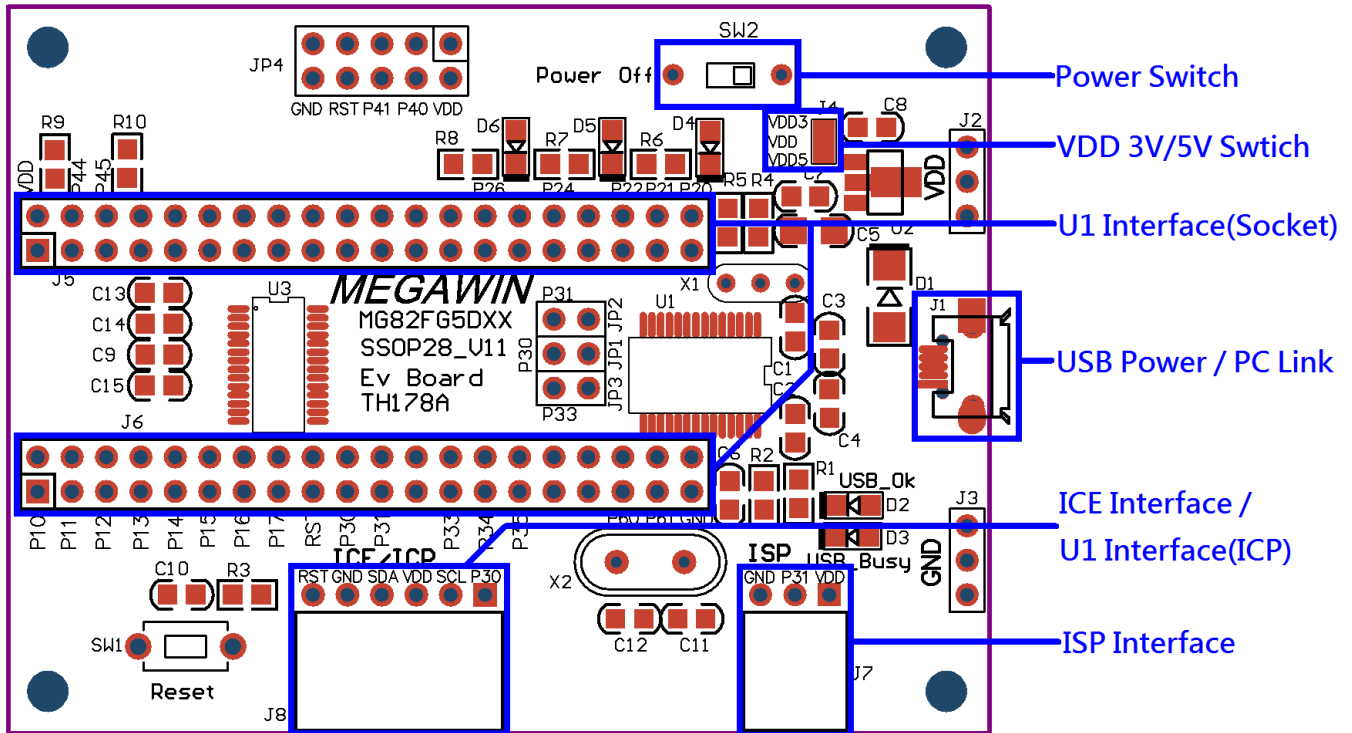
## 2-6 MG82FG5B32



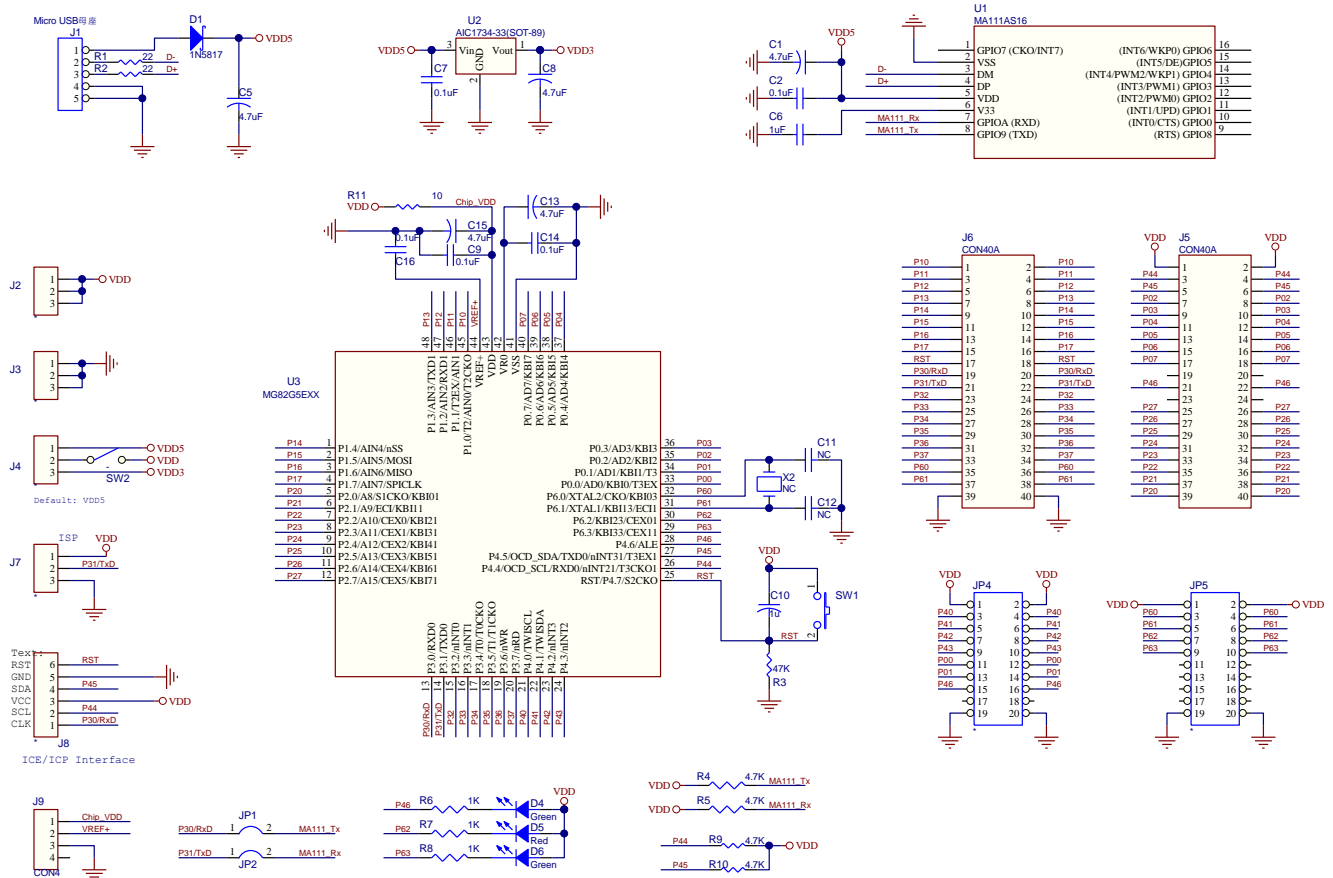
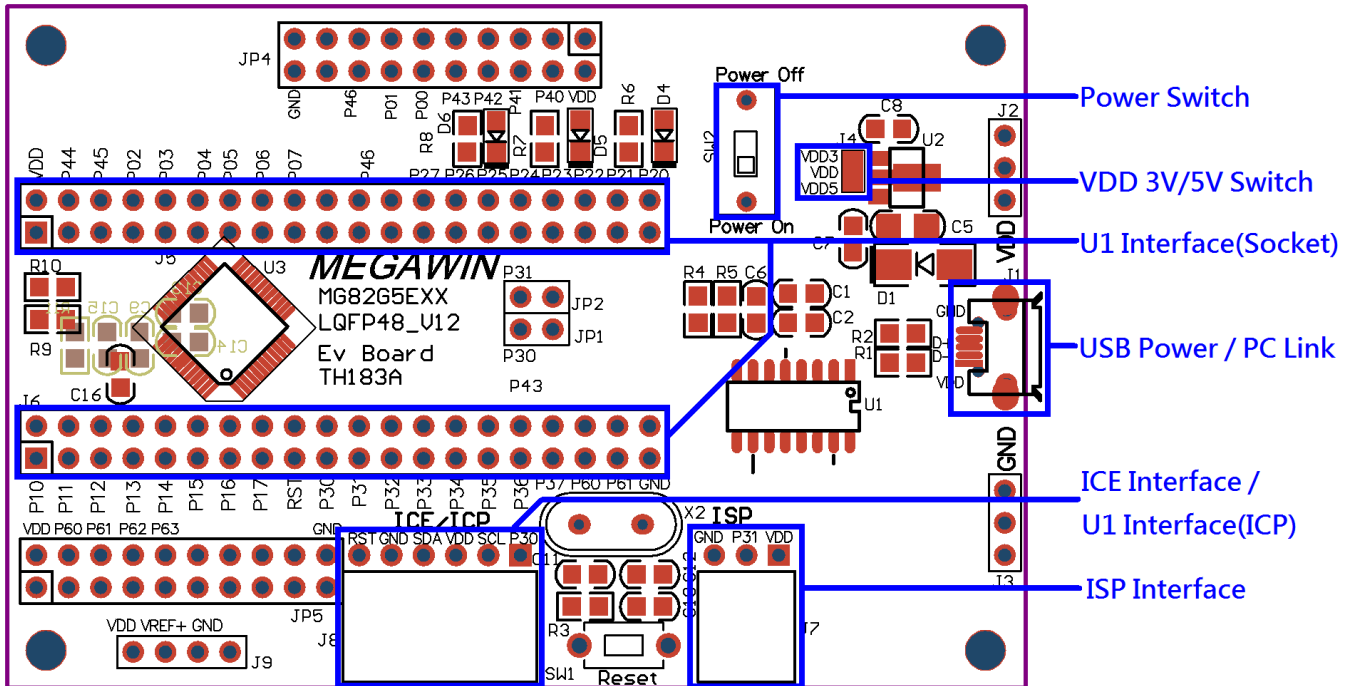
## **2-7 MG82FG5C64**



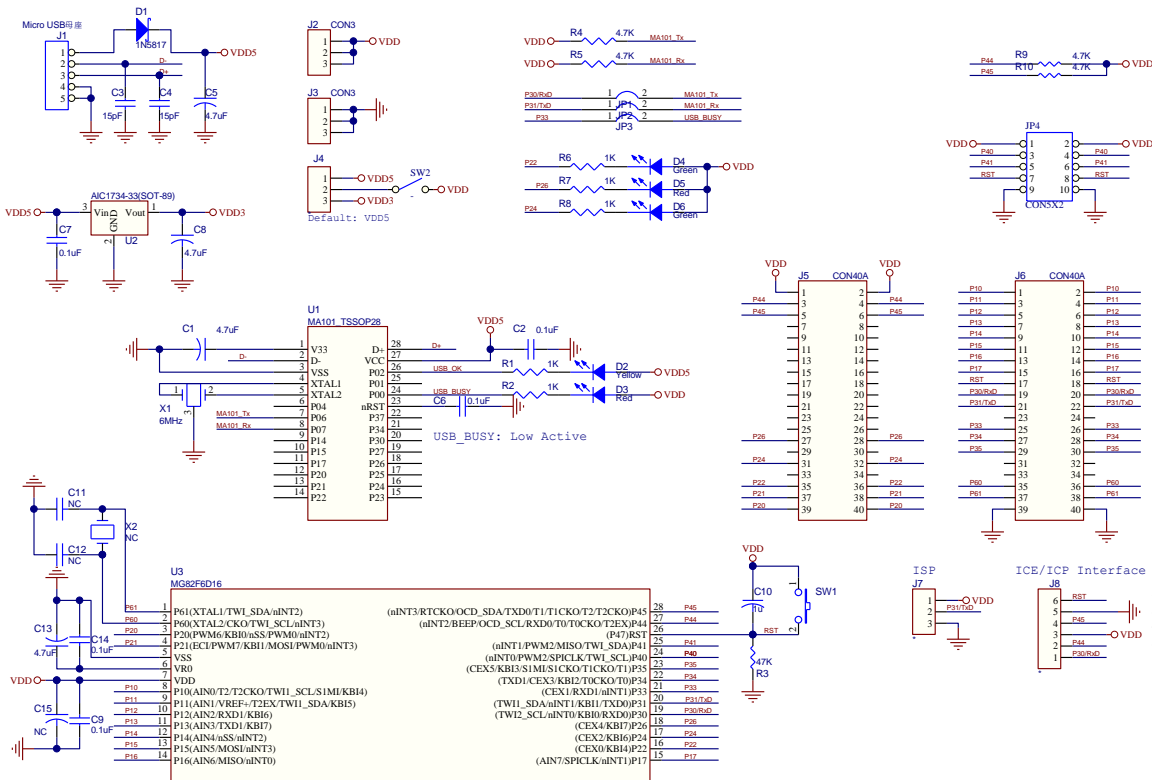
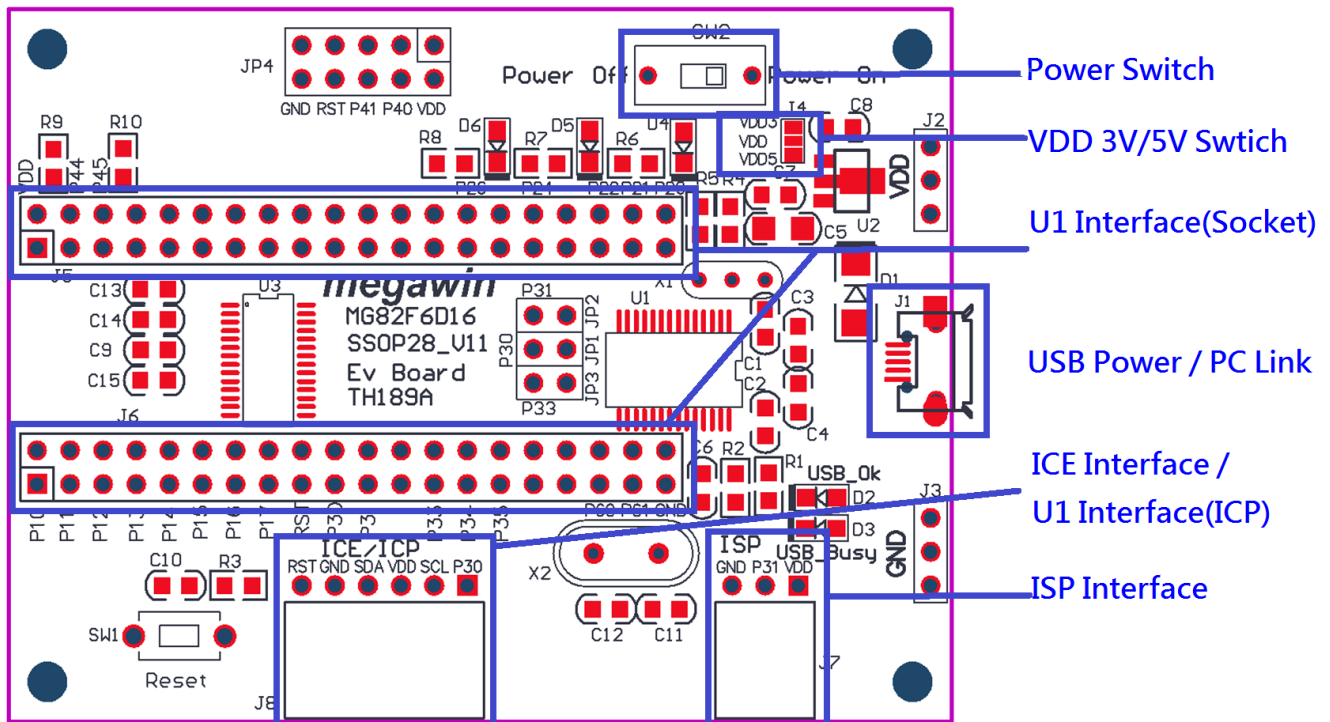
## 2-8 MG82FG5D16 SSOP28



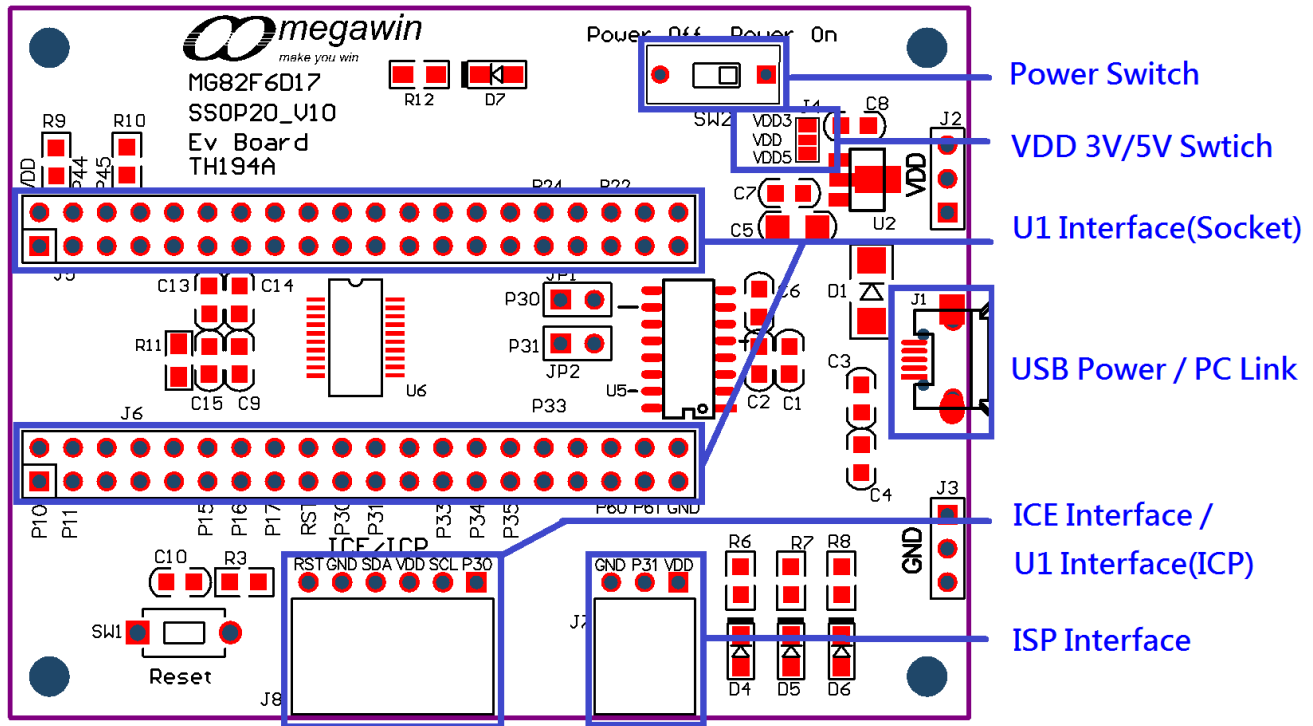
## 2-9 MG82G5EXX



## 2-10 MG82F6D16

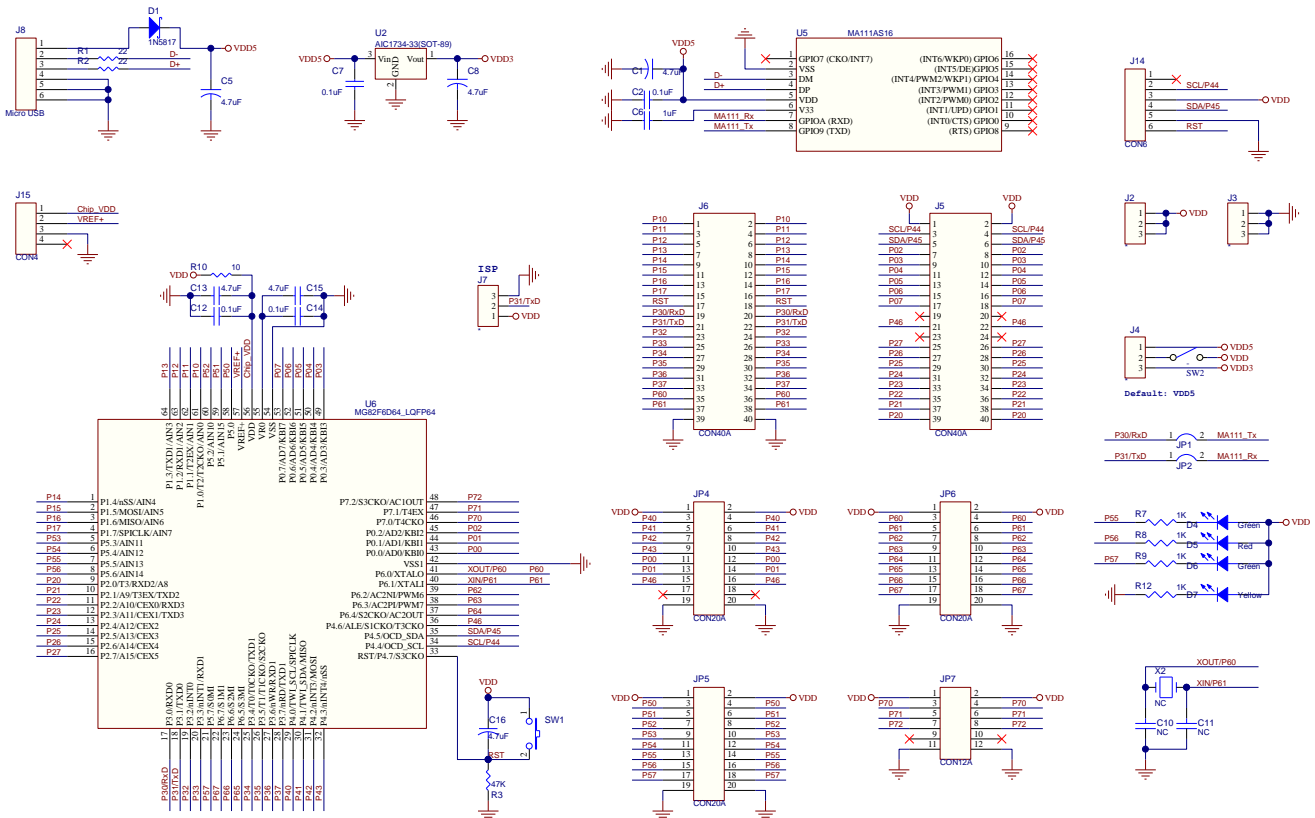
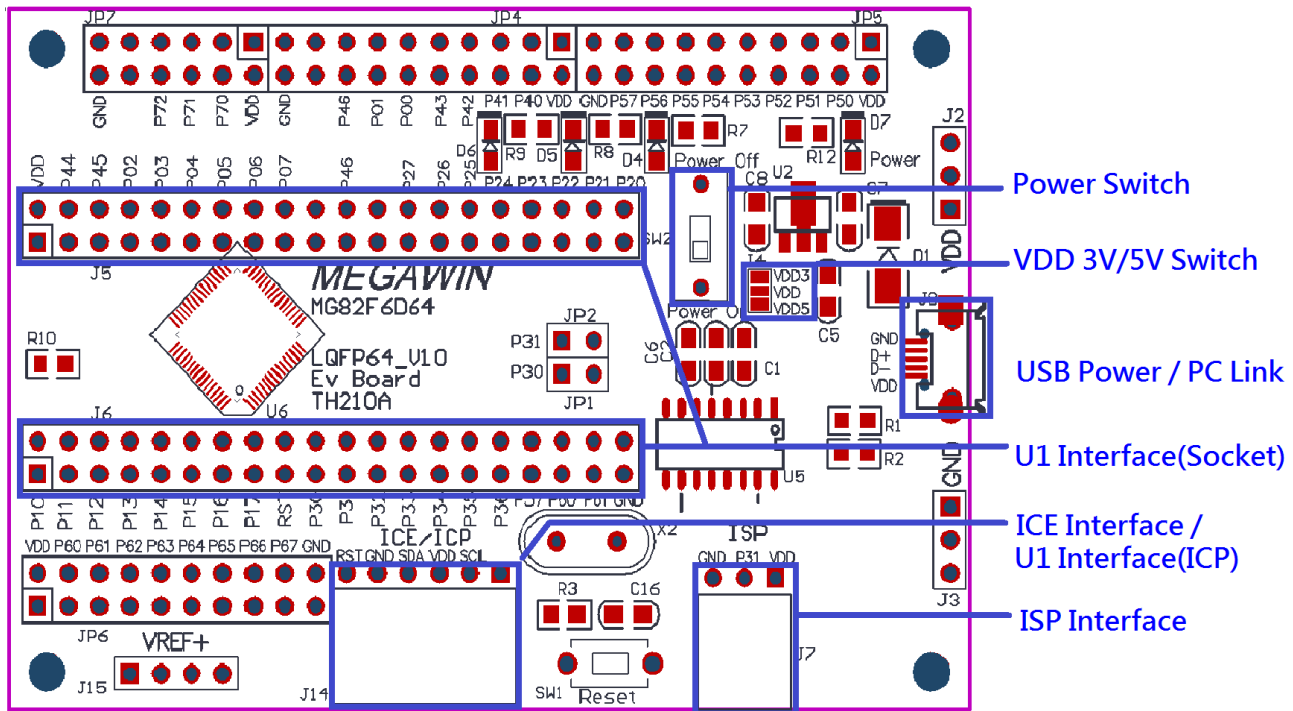


## 2-11 MG82F6D17



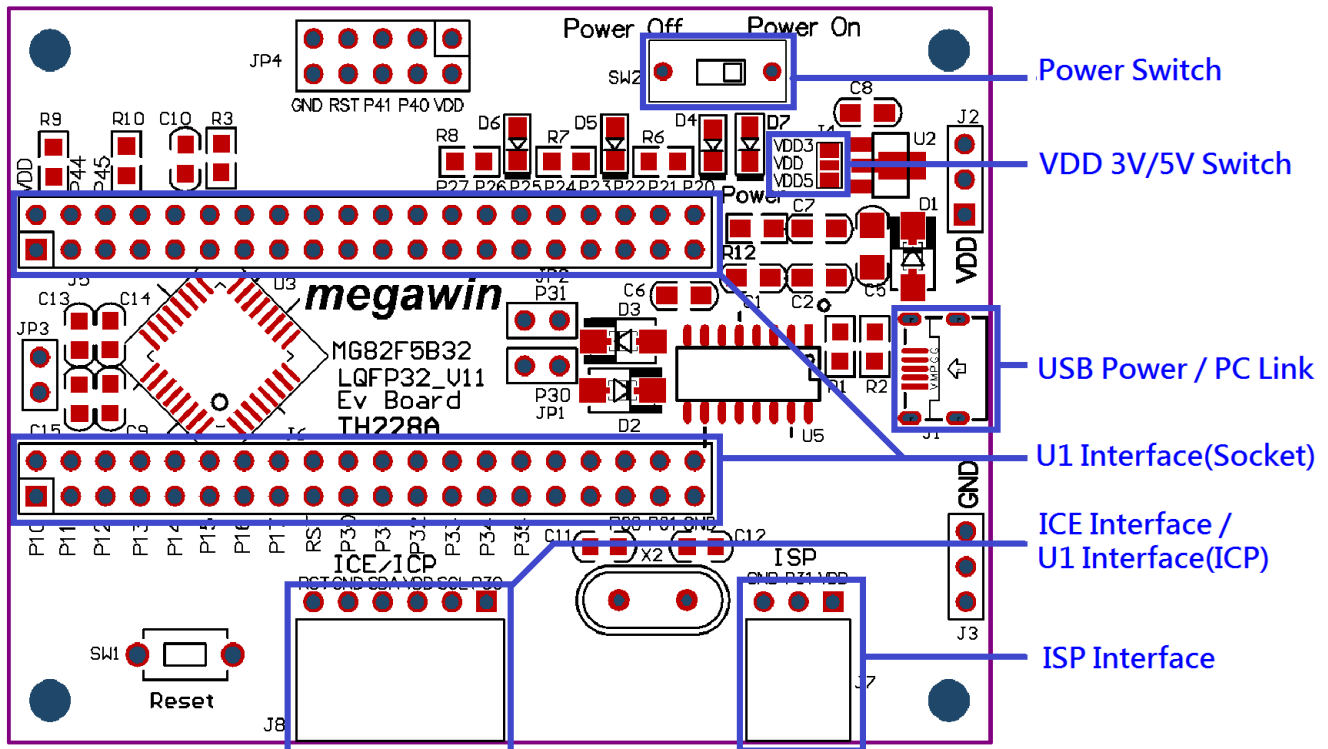
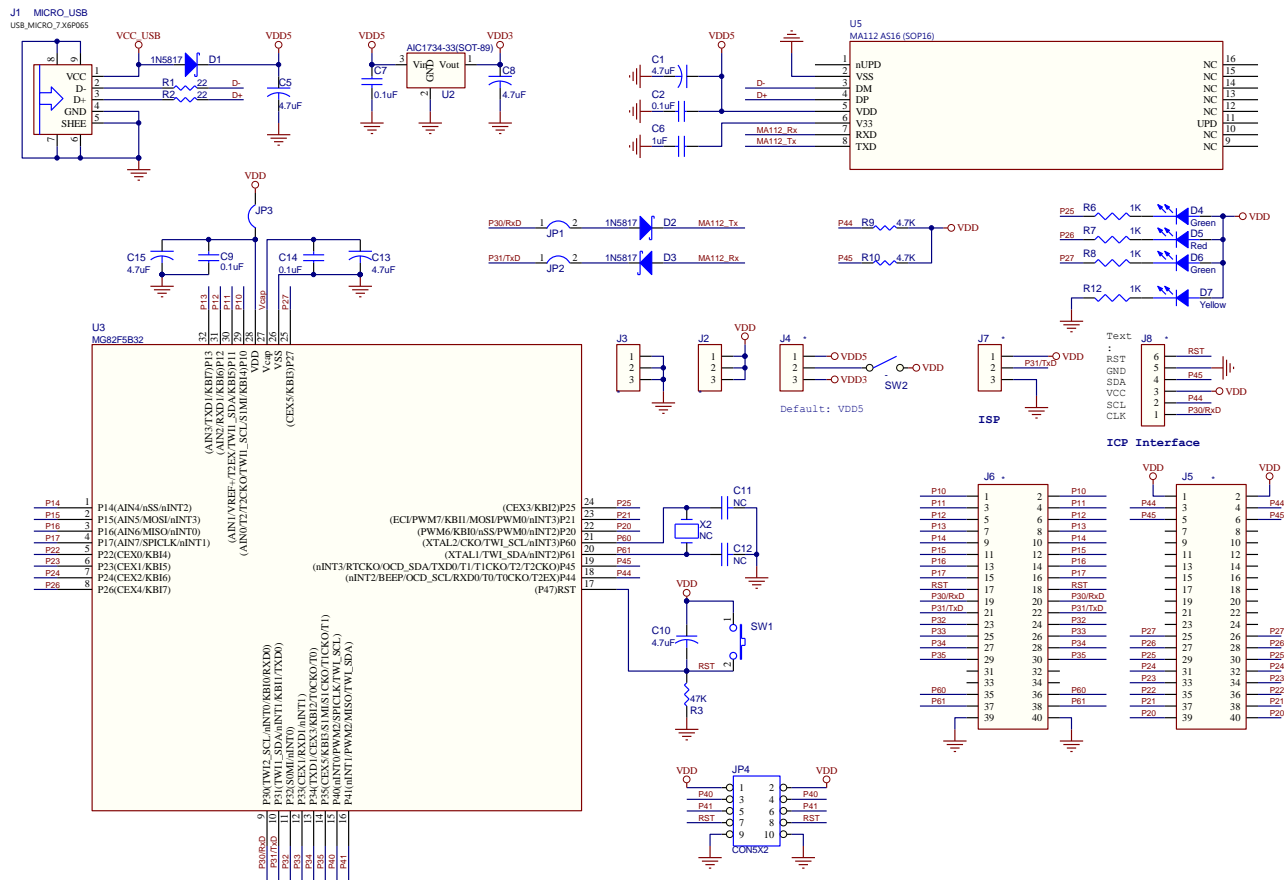


**2-12 MG82F6D64**



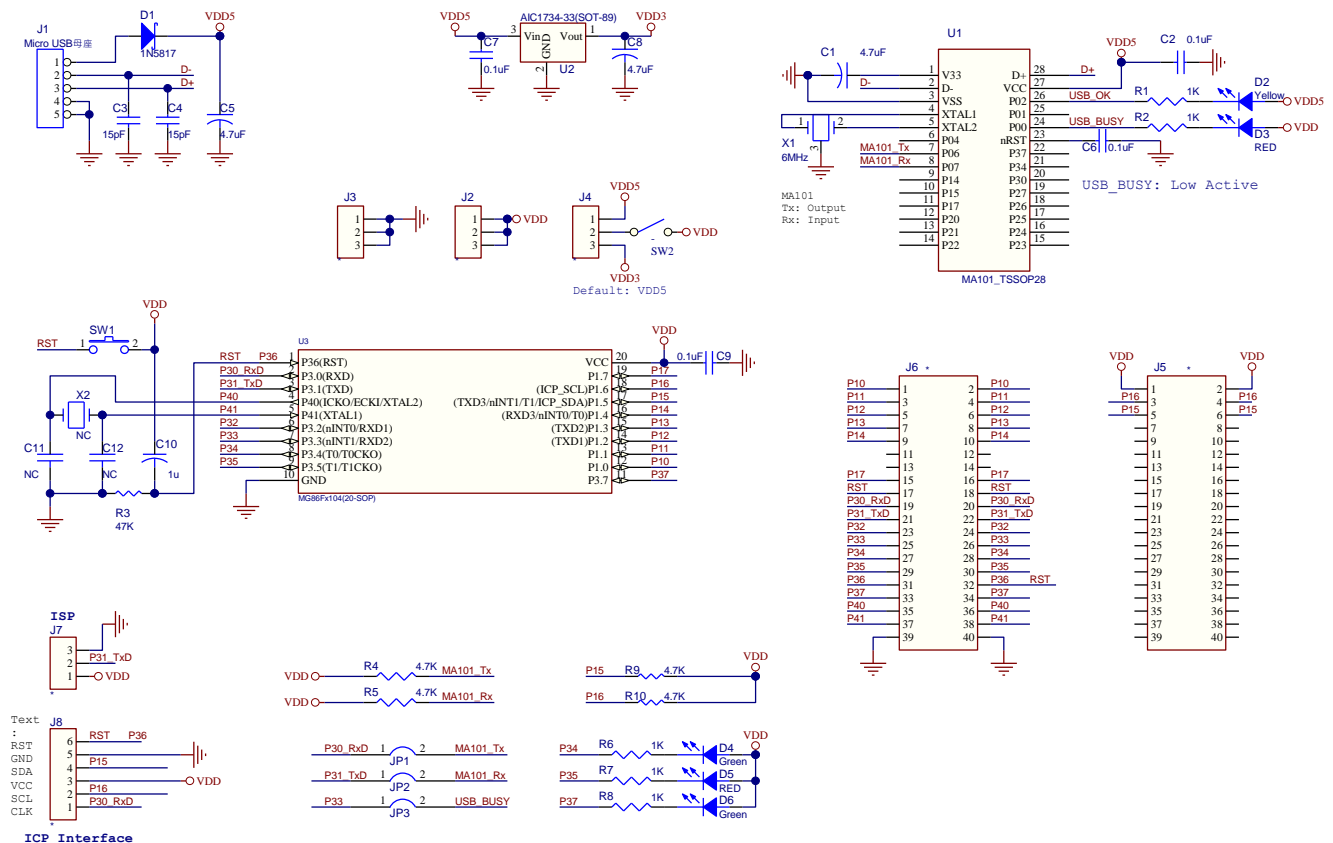
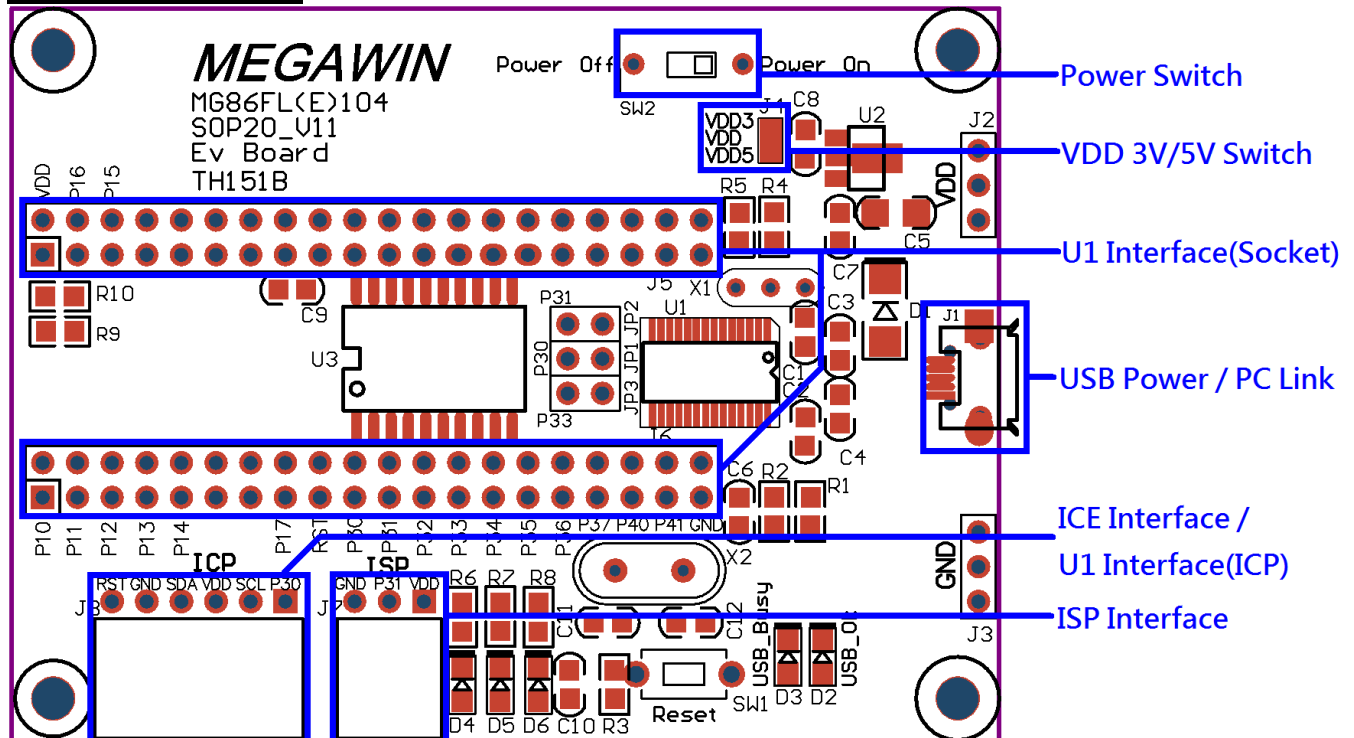


## 2-13 MG82F5B32

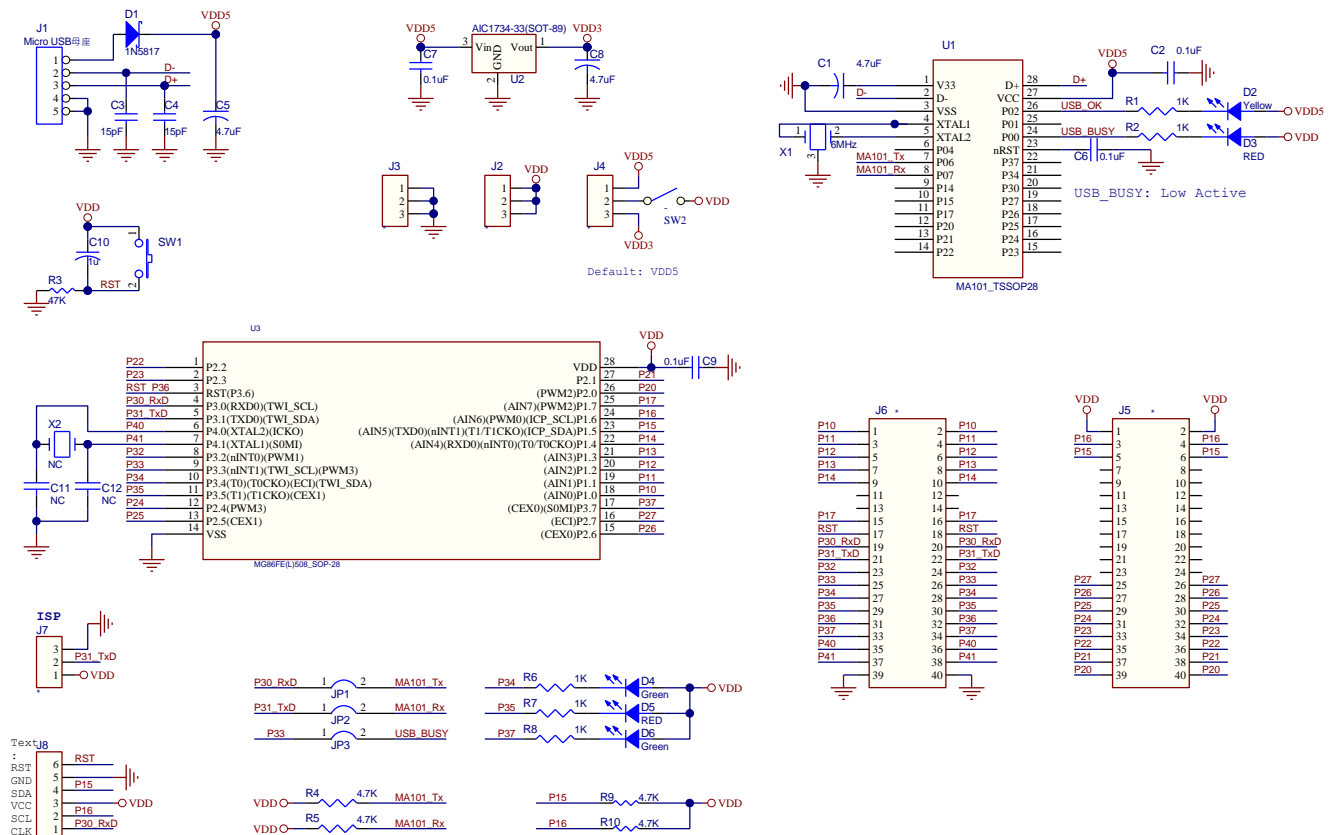
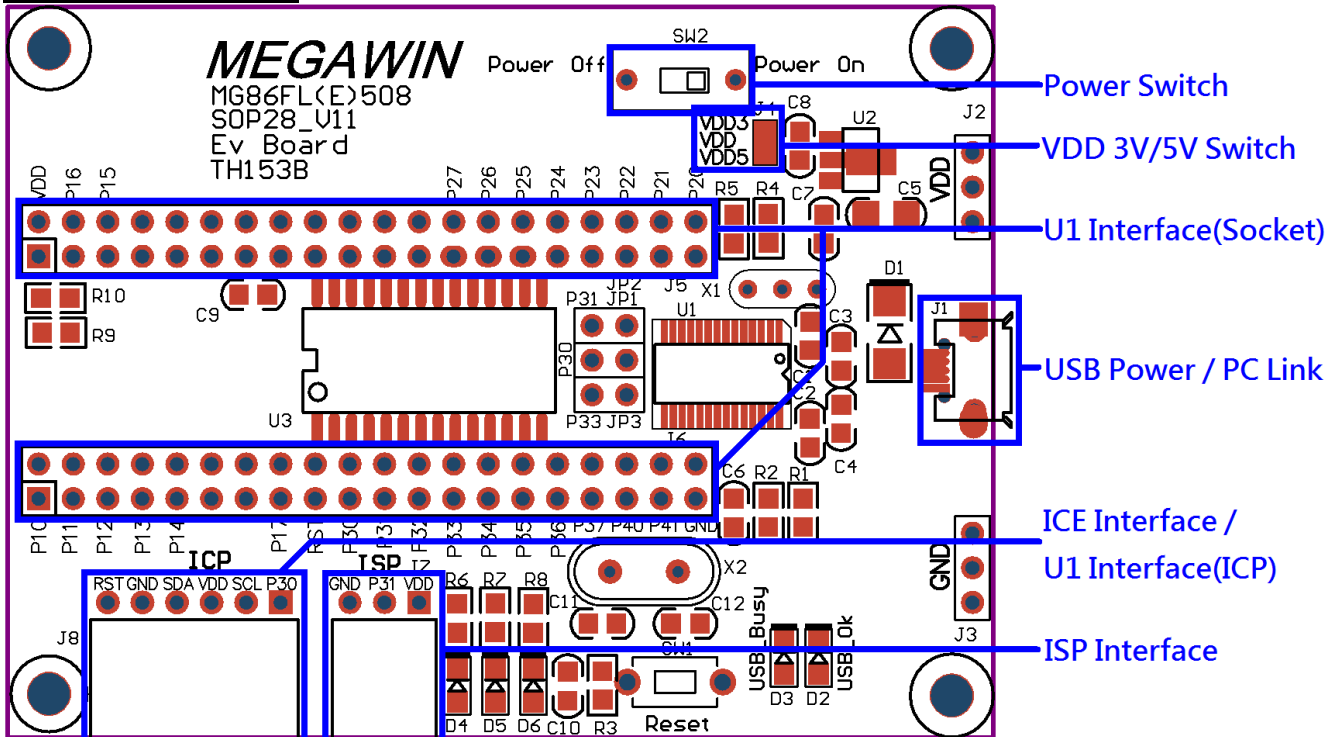


## 3 86 Series

### 3-1 MG86FL(E)104

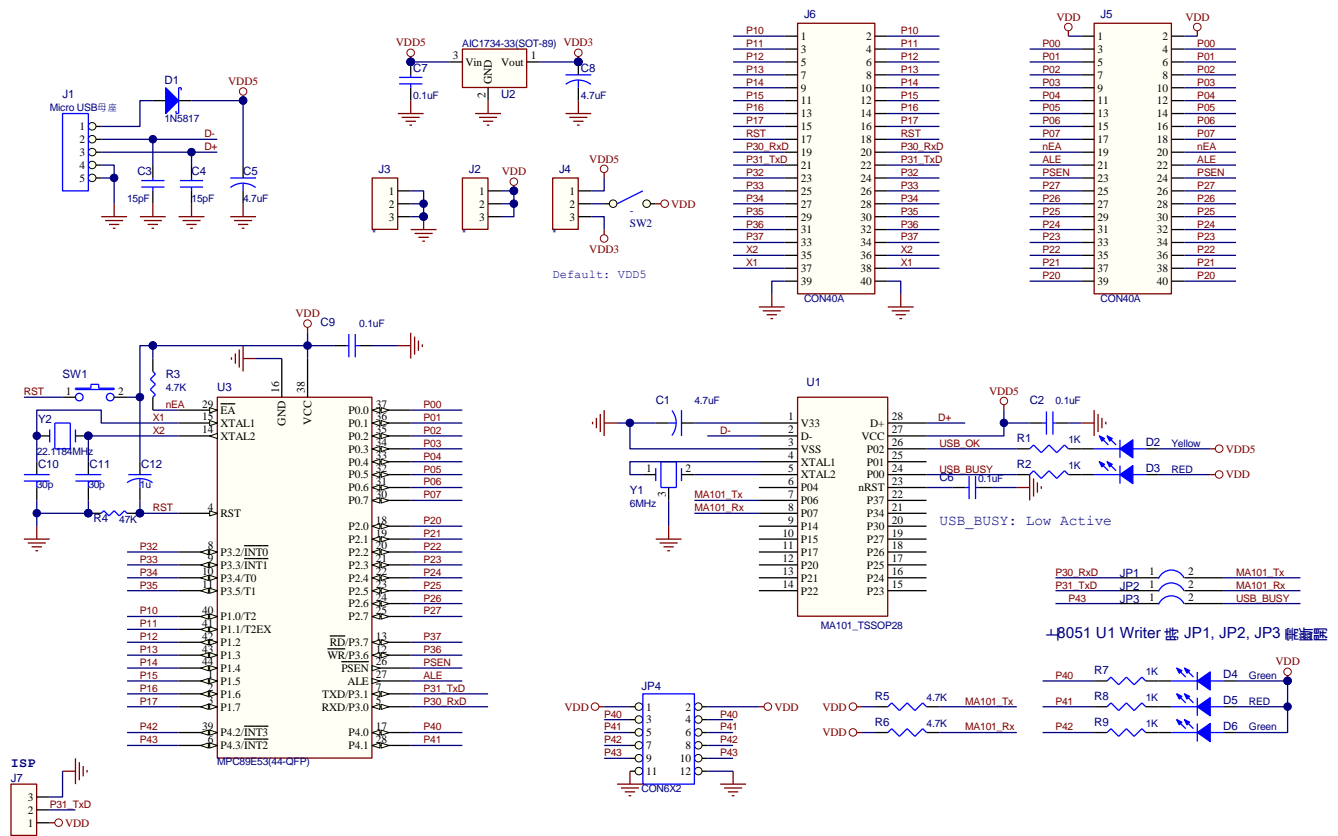
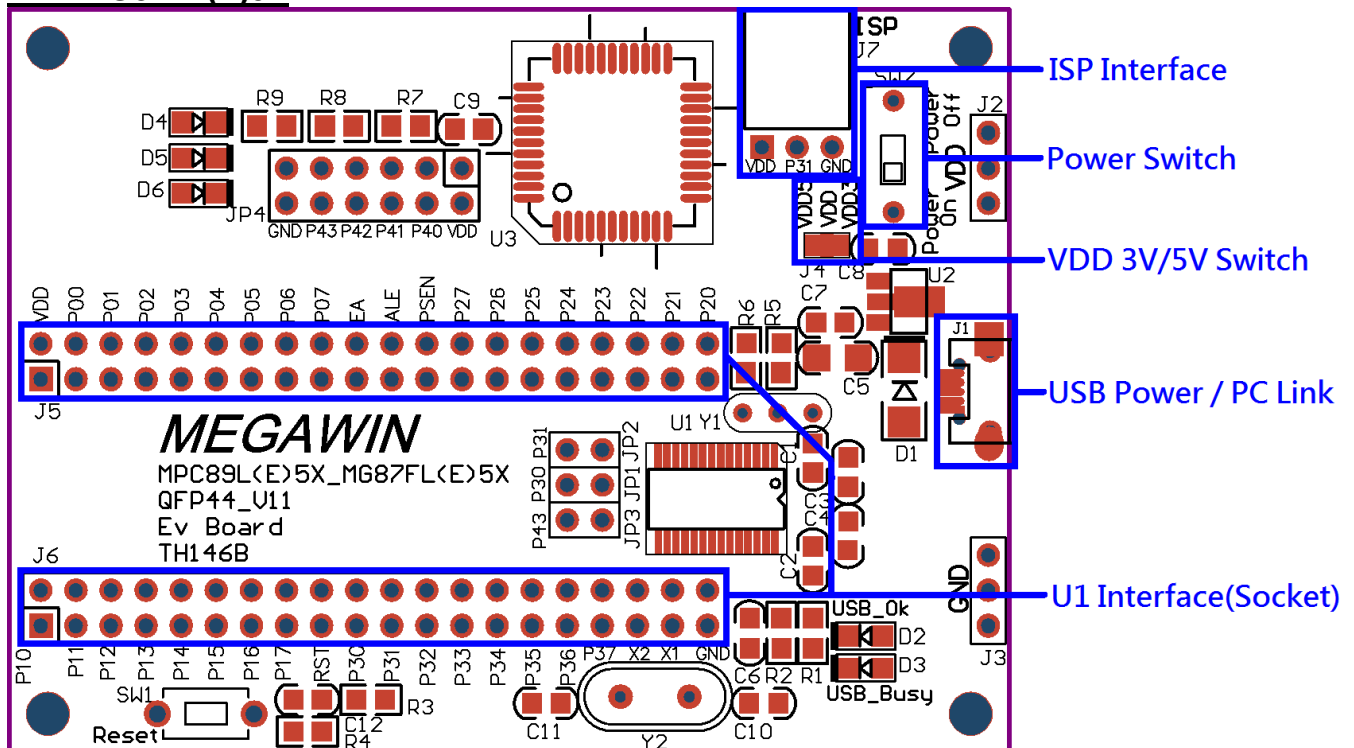


## 3-2 MG86FL(E)508

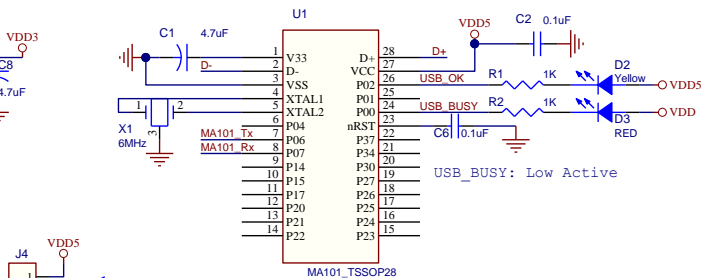
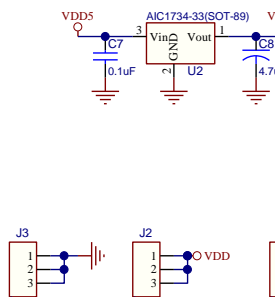
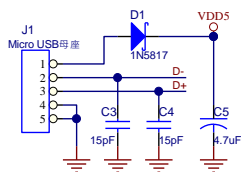
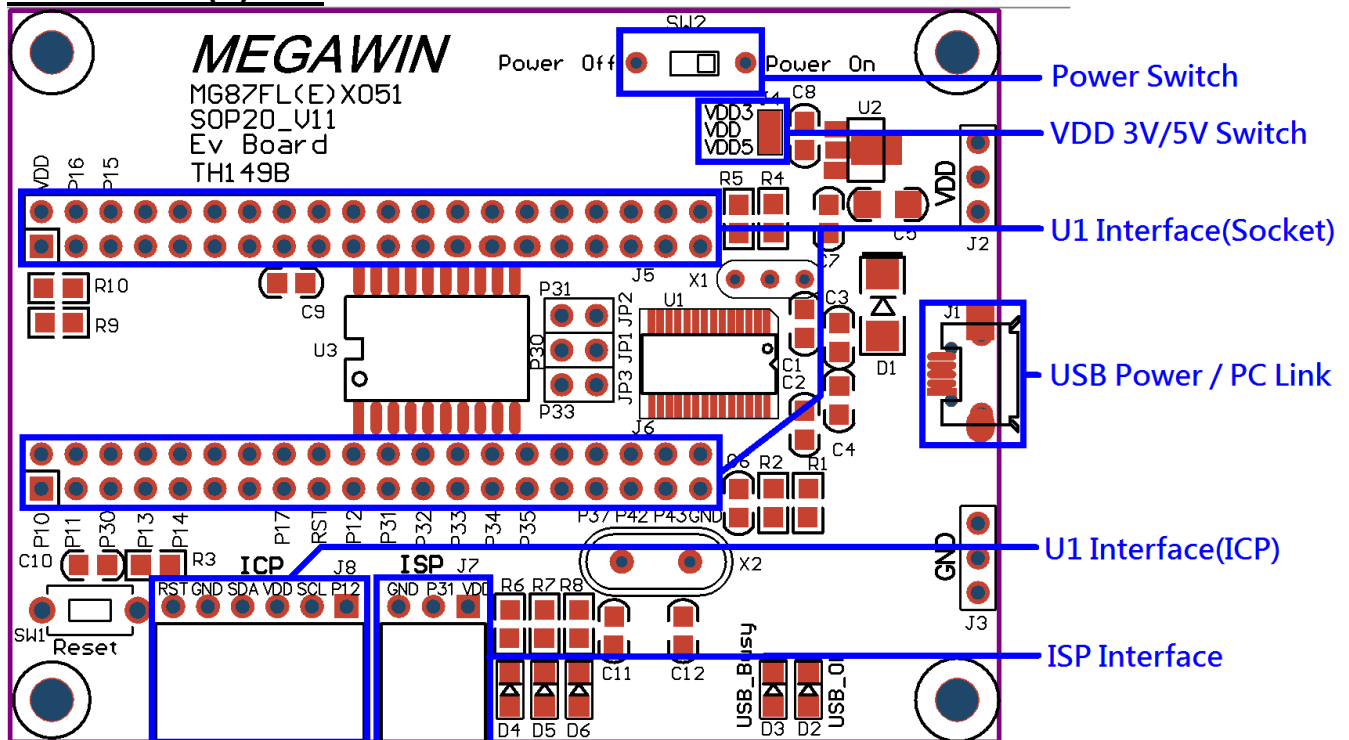


## 4 87 Series

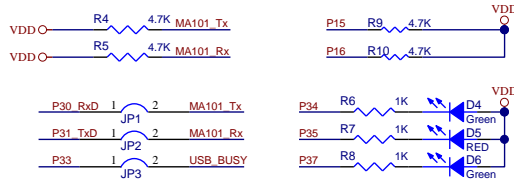
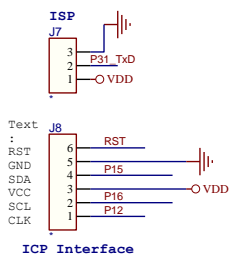
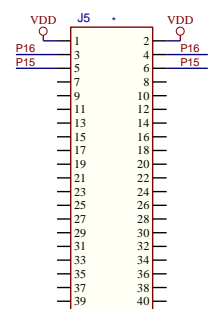
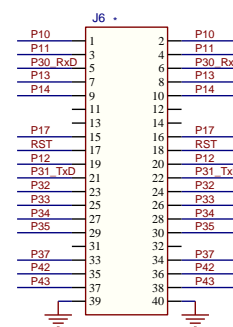
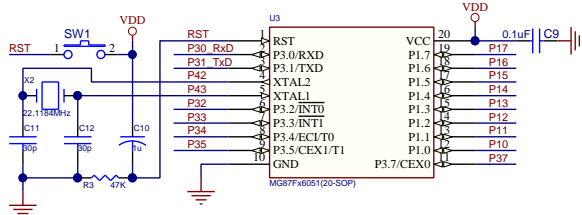
### 4-1 MG87FL(E)5X



## 4-2 MG87FL(E)X051



Default: VDD5



## Revision History

Revision	Description	Date
V1.00	(1) New Create.	2013/09/02
V1.10	(1) Support "Power Switch".	2014/09/10
V1.20	(1) Add "MG82FG5C64"	2015/04/23
V1.30	(1) Add "MG82FG5D16"	2018/01/10
V1.40	(1) Add "MG82G5EXX"	2018/07/12
V1.50	(1) Add"MG82F6D17"	2019/03/19
V1.60	(1) Remove"MG82FG5D16 SSOP20"	2019/09/17
V1.70	(1) Add "MG82F6D64"	2020/05/14
V1.80	(1) Add "MG82F5B32" & "MG82F6D16"	2023/03/20